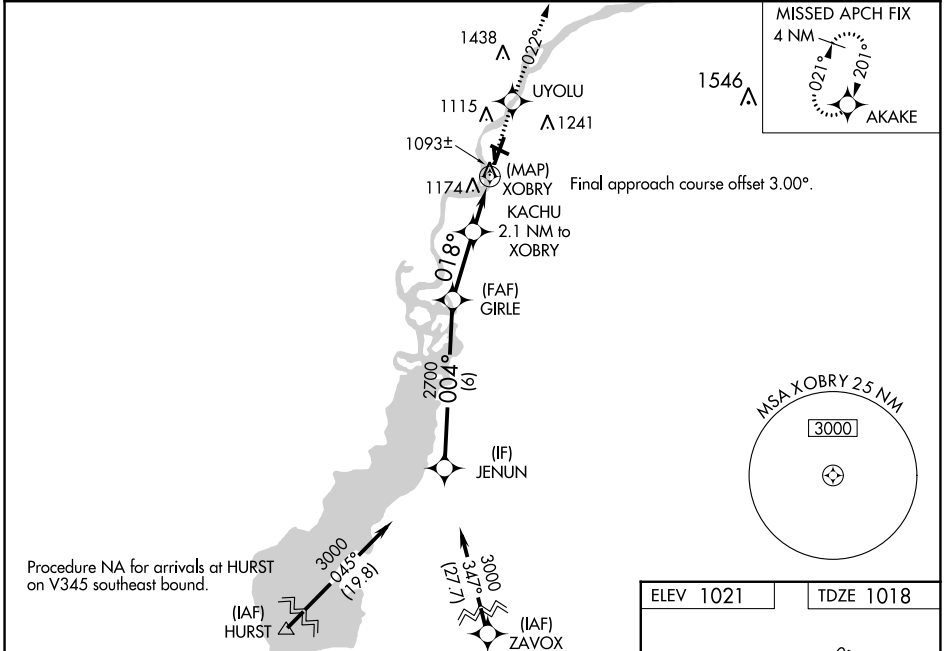


WAAS CH 77731 W02A	APP CRS 018°	Rwy Idg TDZE Apt Elev	5500 1018 1021
--	------------------------	-----------------------------	---

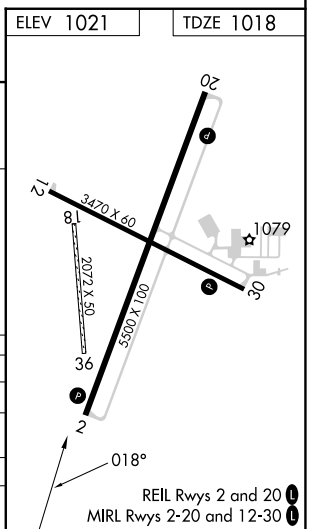
RNAV (GPS) RWY 2

ALEXANDER FLD SOUTH WOOD COUNTY (ISW)

RNP APCH - GPS.		MISSED APPROACH: Climb to 3000 direct UYOLU and on track 022° to AKAKE and hold.
ASOS 126.575	MINNEAPOLIS CENTER 124.4 317.7	UNICOM 122.8 (CTAF) 0



VGS1 and RNAV glidepath not coincident (VGS1 Angle 3.00/TCH 35).				
JENUN	GIRLE	UYOLU	tr 022°	AKAKE
3000	2700	1880		
GP 3.00° TCH 50	004°	018°		
6 NM 2.6 NM 1.4 NM 0.7 NM 0.5 NM				
CATEGORY	A	B	C	D
LPV DA	1298-1		280 (300-1)	
LNAV/VNAV DA	1493-1 3/8		475 (500-1 3/8)	
LNAV MDA	1440-1	422 (500-1)	1440-1 1/4	422 (500-1 1/4)
CIRCLING	1480-1 459 (500-1)	1560-1 539 (600-1)	1620-1 1/2 599 (600-1 1/2)	1800-2 1/2 779 (800-2 1/2)



EC-3, 28 NOV 2024 to 26 DEC 2024

EC-3, 28 NOV 2024 to 26 DEC 2024