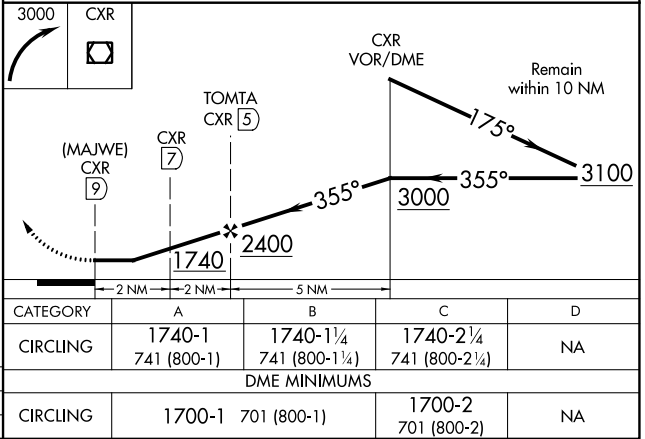
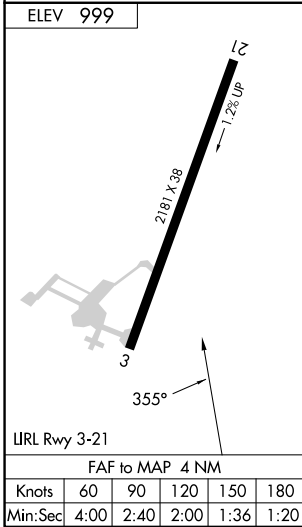
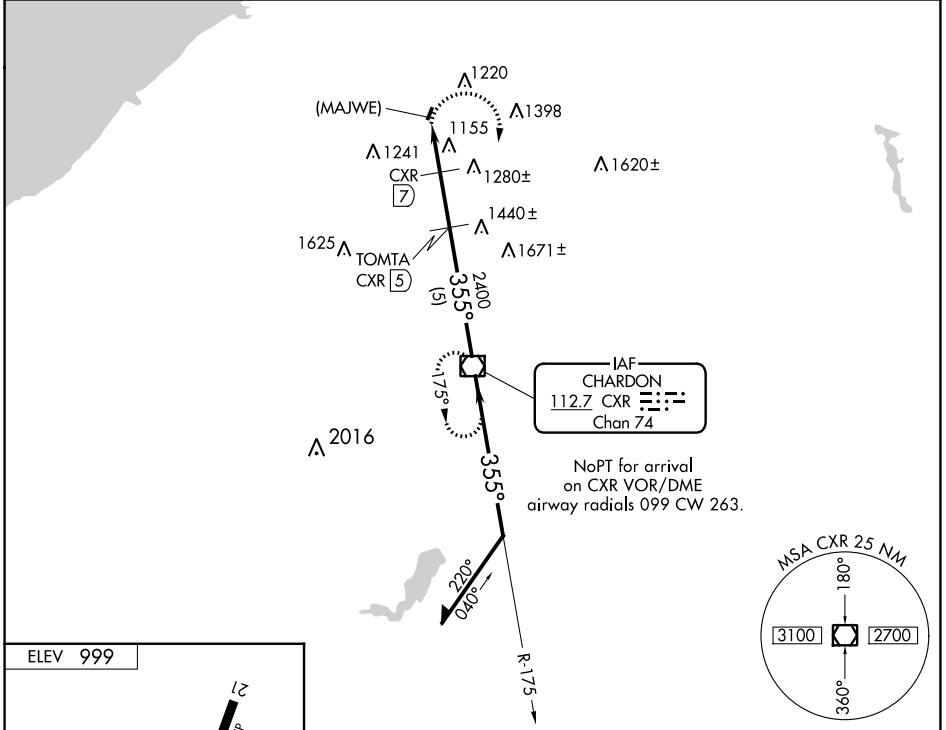


VOR/DME CXR <b>112.7</b> Chan <b>74</b>	APP CRS <b>355°</b>	Rwy Idg TDZE Apt Elev <b>999</b>	<b>N/A</b> <b>N/A</b> <b>999</b>
---	------------------------	---	--

**VOR or GPS-A**  
CONCORD AIRPARK (2G1)

DME required for VOR approach.	MISSED APPROACH: Climbing right turn to 3000 direct CXR VOR/DME and hold.
<p>Procedure not authorized at night. Use Cleveland-Hopkins altimeter setting.</p>	
CLEVELAND APP CON <b>125.35 346.325</b>	UNICOM <b>122.8 (CTAF)</b>



EC-2, 28 NOV 2024 to 26 DEC 2024

EC-2, 28 NOV 2024 to 26 DEC 2024