

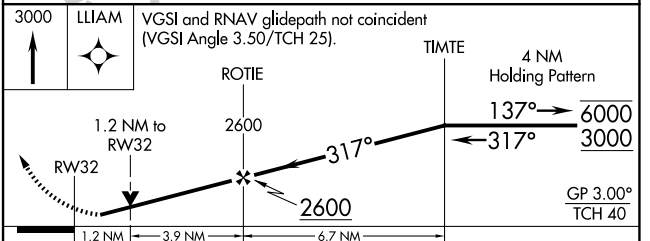
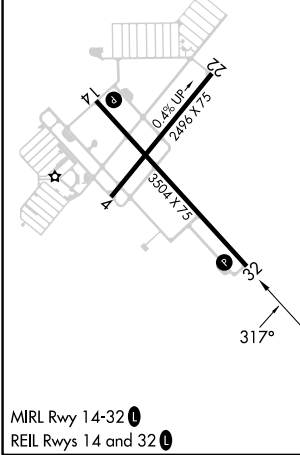
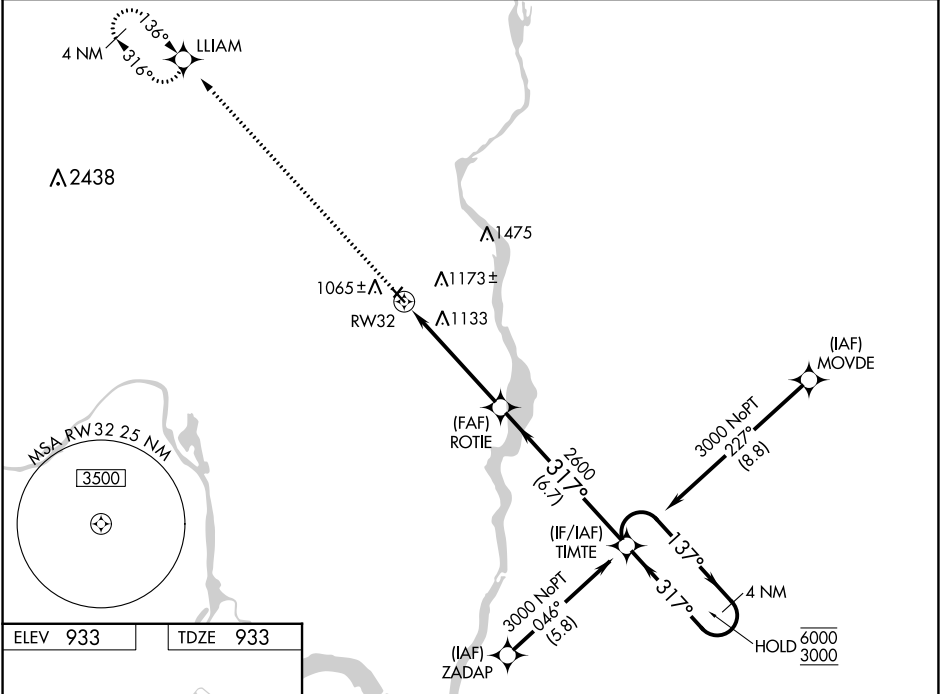
WAAS CH <b>97445</b> <b>W32A</b>	APP CRS <b>317°</b>	Rwy Idg TDZE Apt Elev	<b>3504</b> <b>933</b> <b>933</b>
--	------------------------	-----------------------------	---

# RNAV (GPS) RWY 32

LAKE ELMO (21D)

RNP APCH - GPS.	MISSED APPROACH: Climb to 3000 direct LLIAM and hold.
<p>▼ Rwy 32 helicopter visibility reduction below 3/4 SM NA. For uncompensated Baro-VNAV systems, LNAV/VNAV NA below -16°C or above 54°C. Circling Rwy 4, 22 NA at night.</p>	

AWOS-3 <b>120.075</b>	MINNEAPOLIS APP CON <b>121.2 335.65</b>	CLNC DEL <b>118.625</b>	UNICOM <b>122.8 (CTAF) 0</b>
--------------------------	--	----------------------------	---------------------------------



CATEGORY	A	B	C	D
LPV DA	1209-1	276 (300-1)		NA
LNAV/VNAV DA	1404-1 3/8	471 (500-1 3/8)		NA
LNAV MDA	1400-1	467 (500-1)		NA
CIRCLING	1440-1 507 (600-1)	1500-1 567 (600-1)		NA

NC-1, 28 NOV 2024 to 26 DEC 2024

NC-1, 28 NOV 2024 to 26 DEC 2024