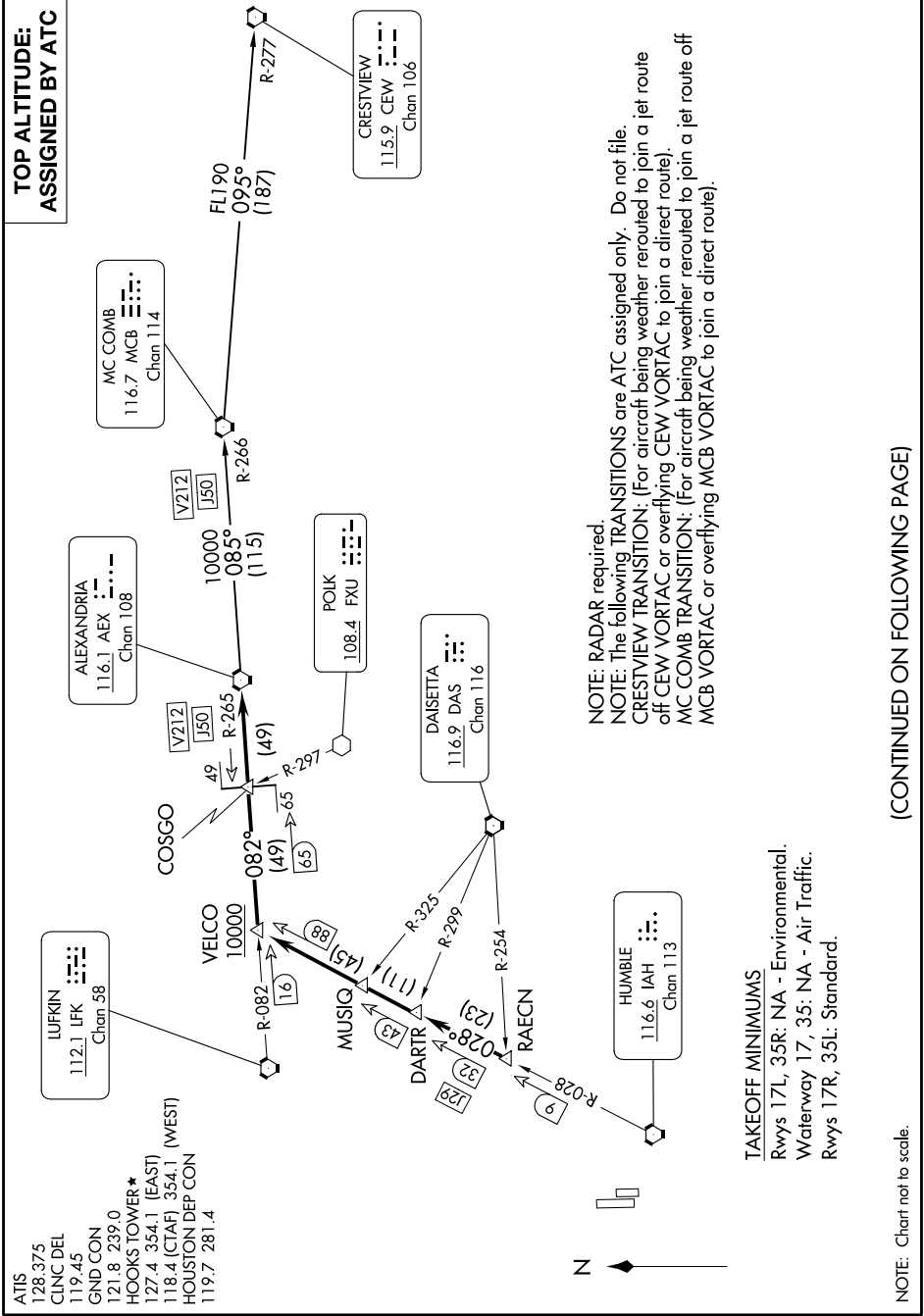


ALEXANDRIA THREE DEPARTURE

SC-5, 28 NOV 2024 to 26 DEC 2024



ALEXANDRIA THREE DEPARTURE

(CONTINUED ON FOLLOWING PAGE)

SC-5, 28 NOV 2024 to 26 DEC 2024

NOTE: RADAR required.
 NOTE: The following TRANSITIONS are ATC assigned only. Do not file:
 CRESTVIEW TRANSITION: (For aircraft being weather routed to join a jet route of CEW VORTAC or overflying CEW VORTAC to join a direct route).
 MC COMB TRANSITION: (For aircraft being weather routed to join a jet route off MCB VORTAC or overflying MCB VORTAC to join a direct route).

TAKEOFF MINIMUMS
 Rwy 17L, 35R: NA - Environmental.
 Waterway 17, 35: NA - Air Traffic.
 Rwy 17R, 35L: Standard.

NOTE: Chart not to scale.