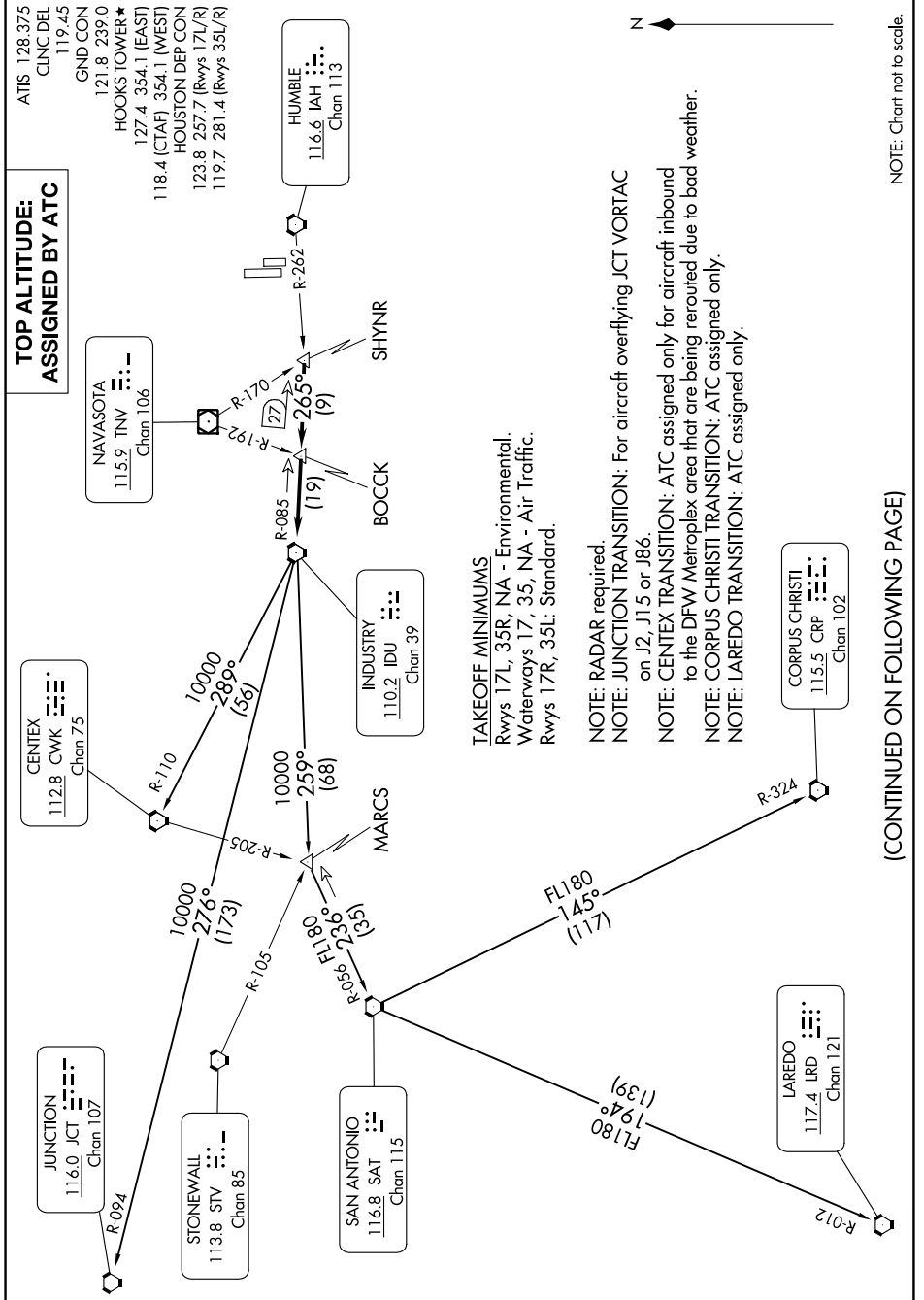


INDUSTRY ONE DEPARTURE

SC-5, 28 NOV 2024 to 26 DEC 2024



TAKEOFF MINIMUMS
Rwys 17L, 35R, NA - Environmental.
Waterways 17, 35, NA - Air Traffic.
Rwys 17R, 35L: Standard.

NOTE: RADAR required
NOTE: JUNCTION TRANSITION: For aircraft overflying JCT VORTAC on J2, J15 or J86.
NOTE: CENTEX TRANSITION: ATC assigned only for aircraft inbound to the DFW Metroplex area that are being rerouted due to bad weather.
NOTE: CORPUS CHRISTI TRANSITION: ATC assigned only.
NOTE: LAREDO TRANSITION: ATC assigned only.

NOTE: Chart not to scale.

(CONTINUED ON FOLLOWING PAGE)

SC-5, 28 NOV 2024 to 26 DEC 2024

INDUSTRY ONE DEPARTURE