

VALPARAISO, INDIANA

AL-5460 (FAA)

23334

LOC I-VPZ 109.7	APP CRS 272°	Rwy Idg TDZE Apt Elev	6500 770 770
---------------------------	------------------------	-----------------------------	---

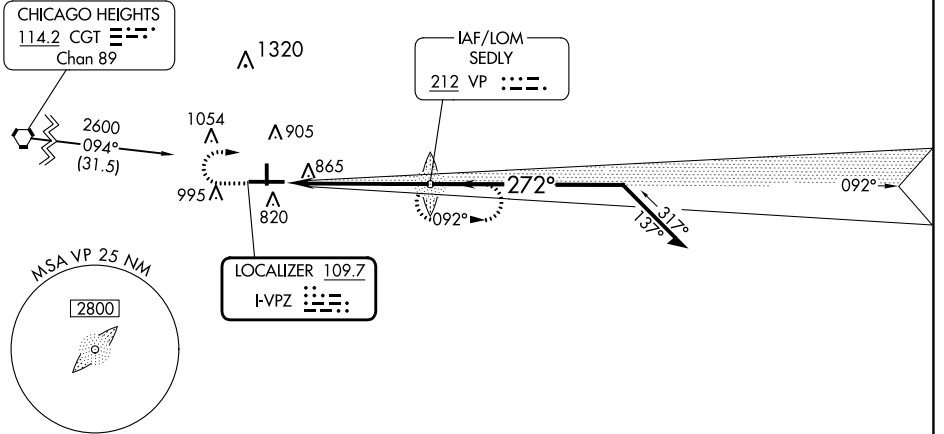
ILS or LOC RWY 27

PORTER COUNTY RGNL (VPZ)

ADF required. ▼ For inop ALS, increase S-LOC 27 Cats C and D visibility to 1 SM. ▲	MALS R 45	MISSED APPROACH: Climb to 1400, then climbing right turn to 2600 direct SEDLY LOM and hold, continue climb-in-hold to 2600.
--	--------------	---

ASOS 125.875	SOUTH BEND APP CON * 132.05 257.8	CLNC DEL 120.525	UNICOM 122.725 (CTAF)
------------------------	---	----------------------------	---------------------------------

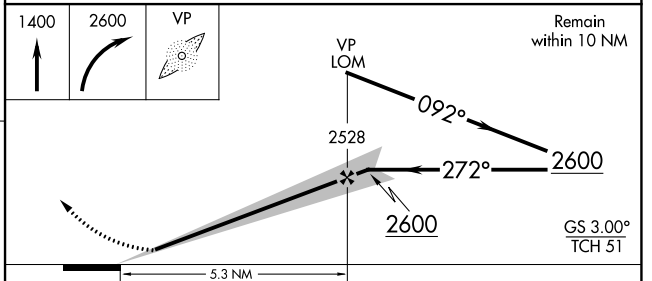
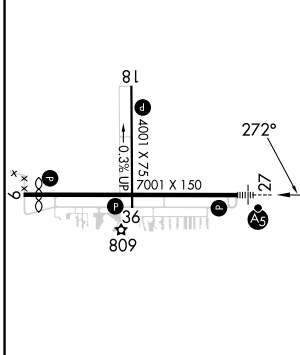
Procedure NA for arrivals at CGT VORTAC on V8-92 westbound.



EC-2, 28 NOV 2024 to 26 DEC 2024

EC-2, 28 NOV 2024 to 26 DEC 2024

ELEV 770	D	TDZE 770
----------	---	----------



HIRL Rwy 9-27
MIRL Rwy 18-36
REIL Rwys 9, 18 and 36

FAF to MAP 5.3 NM

Knots	60	90	120	150	180
Min:Sec	5:18	3:32	2:39	2:07	1:46

CATEGORY	A	B	C	D
S-ILS 27	970-1/2 200 (200-1/2)			
S-LOC 27	1120-1/2 350 (400-1/2)		1120-5/8 350 (400-5/8)	
CIRCLING	1260-1 490 (500-1)	1300-1 530 (600-1)	1360-1 1/2 590 (600-1 1/2)	1620-2 3/4 850 (900-2 3/4)

VALPARAISO, INDIANA
Amdt 3C 15JUN23

41°27'N-87°00'W

PORTER COUNTY RGNL (VPZ) ILS or LOC RWY 27