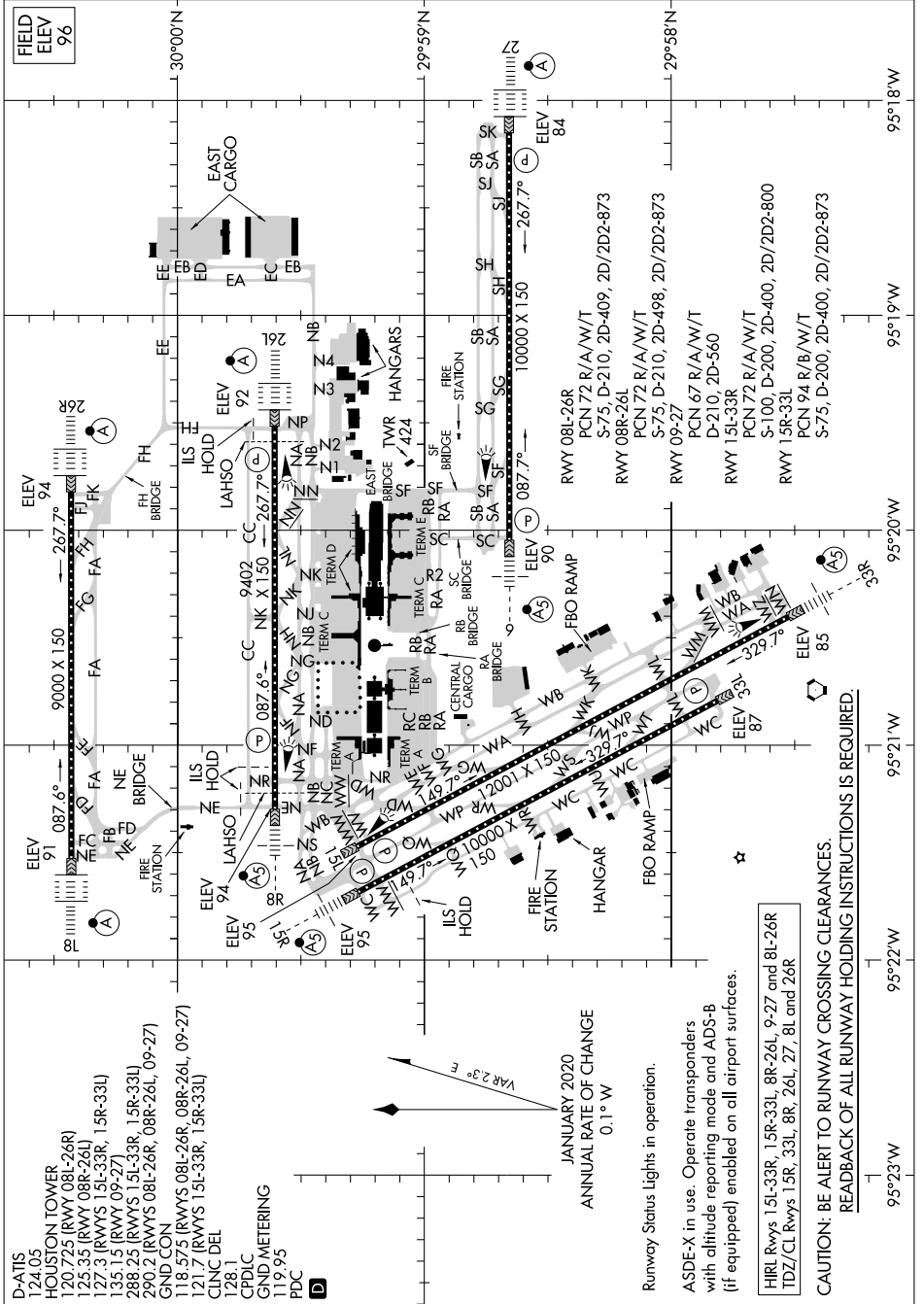


# AIRPORT DIAGRAM

AL-5461 (FAA)

GEORGE BUSH INTCNL/HOUSTON (IAH)  
HOUSTON, TEXAS

SC-5, 28 NOV 2024 to 26 DEC 2024

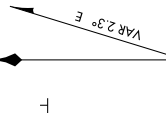


# AIRPORT DIAGRAM

HOUSTON, TEXAS  
GEORGE BUSH INTCNL/HOUSTON (IAH)

SC-5, 28 NOV 2024 to 26 DEC 2024

- D-ATIS 124.05
- HOUSTON TOWER 120.725 (RWY 08L-26R)
- 125.35 (RWY 08R-26L)
- 127.3 (RWYS 15L-33R, 15R-33L)
- 135.15 (RWY 09-27)
- 288.25 (RWYS 15L-33R, 15R-33L)
- 290.2 (RWYS 08L-26R, 08R-26L, 09-27)
- GND CON 118.575 (RWYS 08L-26R, 08R-26L, 09-27)
- CINC DEL 128.1
- CPDIC 119.95
- GND METERING 119.95
- PDC



JANUARY 2020  
ANNUAL RATE OF CHANGE  
0.1° W

Runway Status Lights in operation.  
ASDE-X in use. Operate transponder's with altitude reporting mode and ADS-B (if equipped) enabled on all airport surfaces.

HIRL Rwy's 15L-33R, 15R-33L, 8R-26L, 9-27 and 8L-26R  
TDZ/CL Rwy's 15R, 33L, 8R, 26L, 27, 8L and 26R

CAUTION: BE ALERT TO RUNWAY CROSSING CLEARANCES.  
READBACK OF ALL RUNWAY HOLDING INSTRUCTIONS IS REQUIRED

95°23'W 95°22'W 95°21'W 95°20'W 95°19'W 95°18'W

30°00'N 29°59'N 29°58'N