

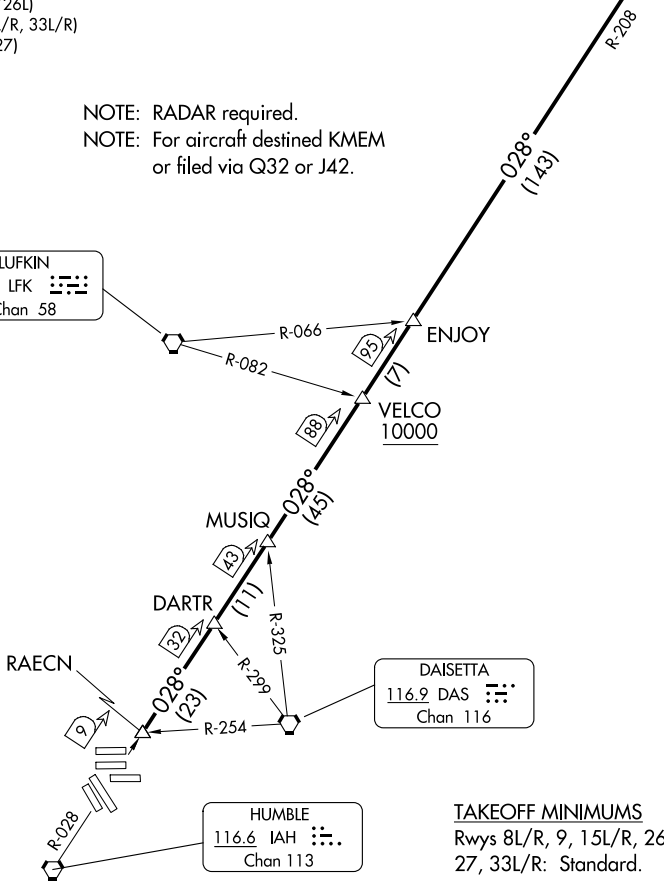
D-ATIS  
124.05  
CLNC DEL  
128.1  
CPDLC  
GND CON  
118.575 (Rwys 8L/R, 26L/R, 9/27)  
121.7 (Rwys 15L/R, 33L/R)  
HOUSTON TOWER  
120.725 290.2 (Rwys 8L/26R)  
125.35 290.2 (Rwys 8R/26L)  
127.3 288.25 (Rwys 15L/R, 33L/R)  
135.15 290.2 (Rwys 9/27)  
HOUSTON DEP CON  
132.25 285.425  
HOUSTON DEP CON  
132.25 285.425

**TOP ALTITUDE:  
16000**

EL DORADO  
115.5 ELD Chan 102

NOTE: RADAR required.  
NOTE: For aircraft destined KMEM  
or filed via Q32 or J42.

LUFKIN  
112.1 LFK Chan 58



DAISETTA  
116.9 DAS Chan 116

HUMBLE  
116.6 IAH Chan 113

**TAKEOFF MINIMUMS**  
Rwys 8L/R, 9, 15L/R, 26L/R,  
27, 33L/R: Standard.

NOTE: Chart not to scale.

## DEPARTURE ROUTE DESCRIPTION

**TAKEOFF ALL RUNWAYS:** Climb on assigned heading for RADAR vectors to RAECN INT, maintain 16000. Expect filed altitude 10 minutes after departure, thence . . .

. . . on IAH R-028 and the ELD R-208 to ELD VOR/DME, cross VELCO INT at or above 10000.