

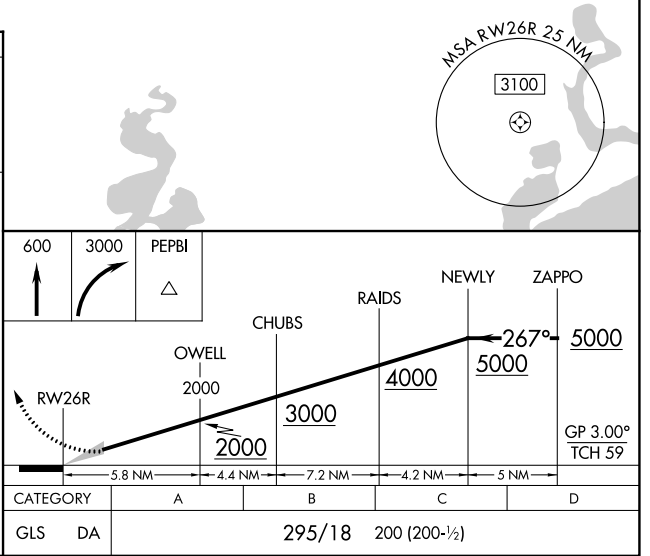
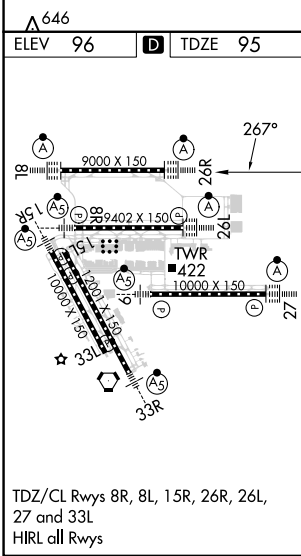
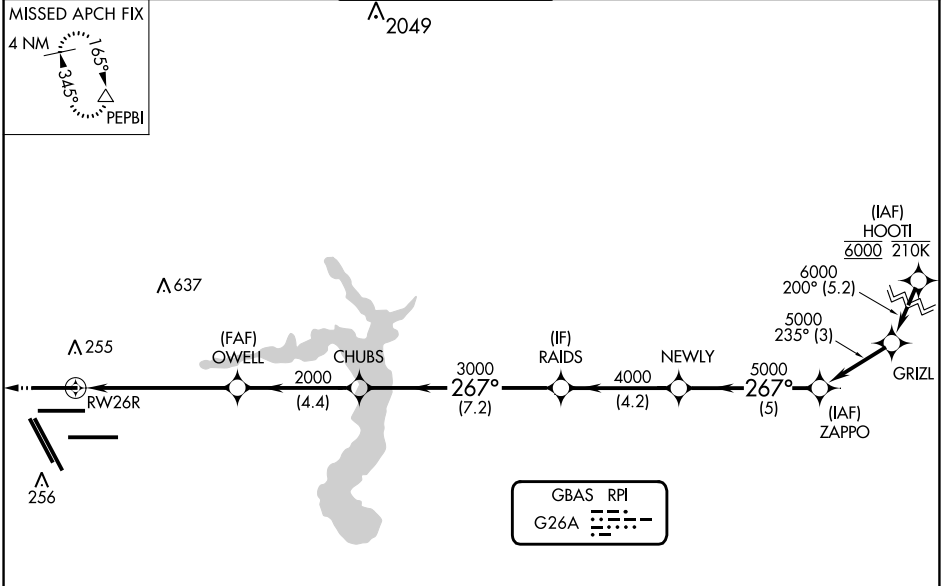
GBAS CH 21484 G26A	APP CRS 267°	Rwy Idg TDZE Apt Elev	9000 95 96
--	------------------------	-----------------------------	---------------------------------------

GLS RWY 26R

GEORGE BUSH INTCNL/HOUSTON (IAH)

RNP APCH - GPS.		ALSIF-2	MISSED APPROACH: Climb to 600 then climbing right turn to 3000 direct PEPBI and hold.		
Simultaneous approach authorized. Use of FD or AP required during simultaneous operations. Autopilot coupled approach NA below 295.					

D-ATIS 124.05	HOUSTON APP CON 120.05 379.1 EAST 124.35 316.15 WEST	HOUSTON TOWER 120.725 290.2	GND CON 118.575	CLNC DEL 128.1	CPDLC
-------------------------	--	---------------------------------------	---------------------------	--------------------------	-------



SC-5, 28 NOV 2024 to 26 DEC 2024

SC-5, 28 NOV 2024 to 26 DEC 2024