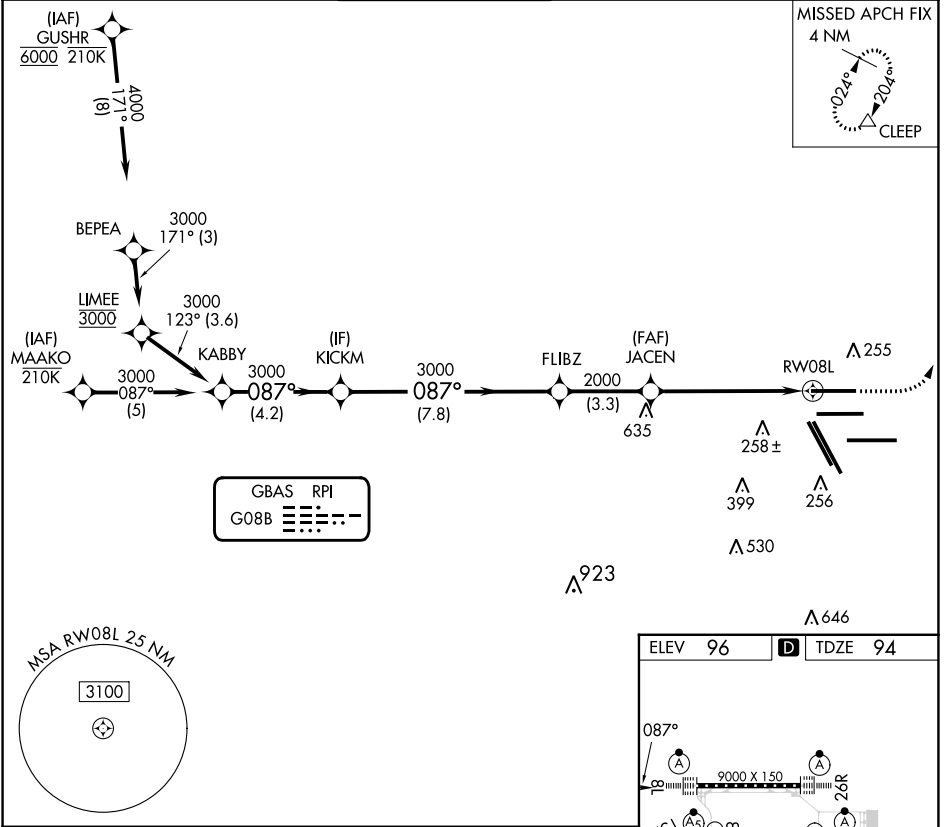


GBAS CH 21073 G08B	APP CRS 087°	Rwy Idg TDZE Apt Elev	9000 94 96
--	------------------------	-----------------------------	---------------------------------------

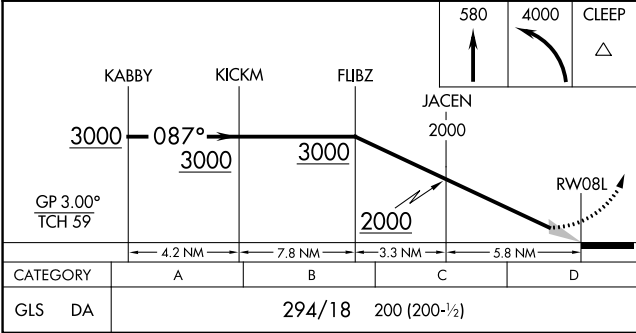
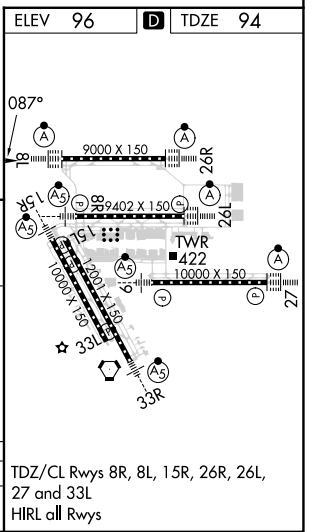
GLS RWY 8L

GEORGE BUSH INTCNL/HOUSTON (IAH)

RNP APCH - GPS.			ALSIF-2	MISSED APPROACH: Climb to 580 then climbing left turn to 4000 direct CLEEP and hold.	
▼ Use of FD or AP required during simultaneous operations. Autopilot coupled ▲ NA approach NA below 294. Simultaneous approach authorized.					
D-ATIS 124.05	HOUSTON APP CON 120.05 379.1 EAST 124.35 316.15 WEST	HOUSTON TOWER 120.725 290.2	GND CON 118.575	CLNC DEL 128.1	CPDLC



GBAS RPI
G08B



SC-5, 28 NOV 2024 to 26 DEC 2024

SC-5, 28 NOV 2024 to 26 DEC 2024