

(GMANN.HTOWN3) 23278

AL-5461 (FAA)

GEORGE BUSH INTCNL/HOUSTON (IAH)

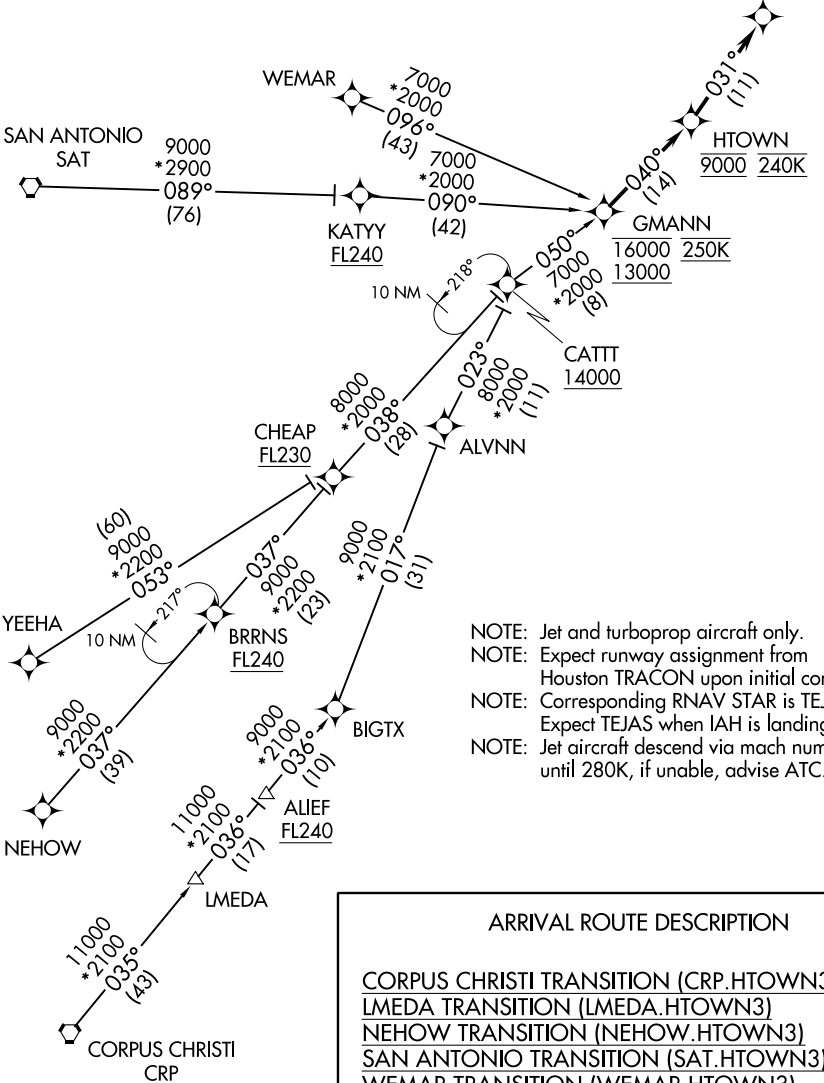
HTOWN THREE ARRIVAL (RNAV)

HOUSTON, TEXAS

HOUSTON APP CON
119.175 291.675
D-ATIS
124.05

RNAV 1 - DME/DME/IRU or GPS.
RADAR required.

WDLNS
7000 210K
Ldg Rwy 8R



- NOTE: Jet and turboprop aircraft only.
- NOTE: Expect runway assignment from Houston TRACON upon initial contact.
- NOTE: Corresponding RNAV STAR is TEJAS. Expect TEJAS when IAH is landing west.
- NOTE: Jet aircraft descend via mach number until 280K, if unable, advise ATC.

ARRIVAL ROUTE DESCRIPTION

CORPUS CHRISTI TRANSITION (CRP.HTOWN3)
LMEDA TRANSITION (LMEDA.HTOWN3)
NEHOW TRANSITION (NEHOW.HTOWN3)
SAN ANTONIO TRANSITION (SAT.HTOWN3)
WEMAR TRANSITION (WEMAR.HTOWN3)
YEEHA TRANSITION (YEEHA.HTOWN3)

From GMANN on track 040° to cross HTOWN at 9000 and at 240K, then on track 031° to cross WDLNS at 7000 and at 210K. Expect ILS or LOC RWY 8R.

NOTE: Chart not to scale.

SC-5, 28 NOV 2024 to 26 DEC 2024

SC-5, 28 NOV 2024 to 26 DEC 2024

HTOWN THREE ARRIVAL (RNAV)

(GMANN.HTOWN3) 05OCT23

HOUSTON, TEXAS

GEORGE BUSH INTCNL/HOUSTON (IAH)