

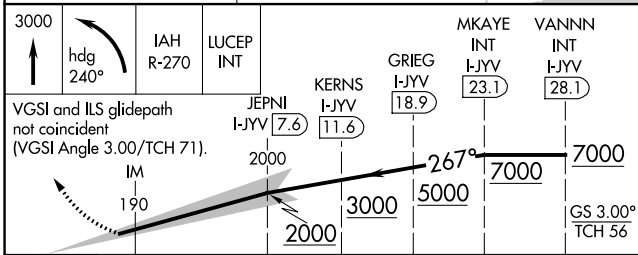
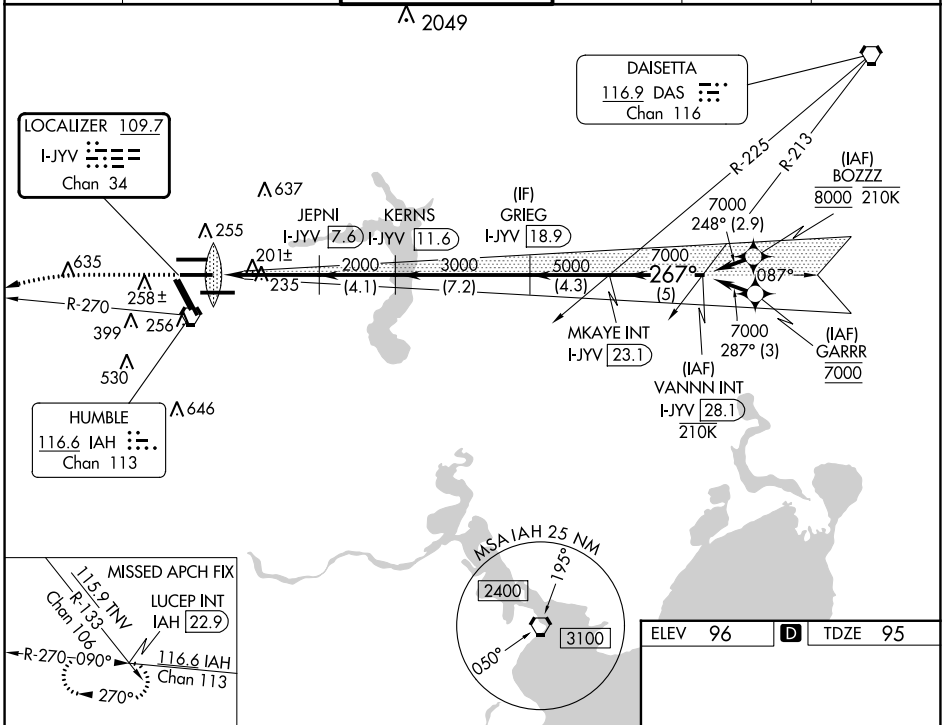
LOC/DME I-JYV <b>109.7</b> Chan <b>34</b>	APP CRS <b>267°</b>	Rwy Idg <b>9402</b> TDZE <b>95</b> Apt Elev <b>96</b>
---	------------------------	---

# ILS RWY 26L (CAT II & III)

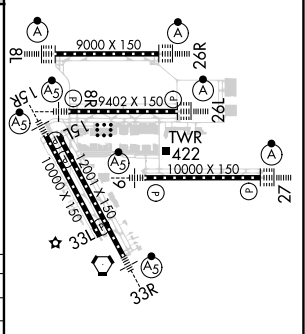
GEORGE BUSH INTCNL/HOUSTON (IAH)

DME required. From BOZZZ, GARRR: RNAV 1-GPS required.		ALSF-2 	MISSED APPROACH: Climb to 3000 then left turn heading 240° and IAH VORTAC R-270 to LUCEP INT/IAH 22.9 DME and hold.
Simultaneous approach authorized with Rwy 26R and Rwy 27. Cat II: RVR 1000 authorized with specific OPSPEC, MSPEC, or LOA approval and use of autoland or HUD to touchdown.			

D-ATIS <b>124.05</b>	HOUSTON APP CON <b>120.05 379.1</b> EAST <b>124.35 316.15</b> WEST	HOUSTON TOWER <b>125.35 290.2</b>	GND CON <b>118.575</b>	CLNC DEL <b>128.1</b>	CPDLC
-------------------------	--	--------------------------------------	---------------------------	--------------------------	-------



ELEV 96	<b>D</b> TDZE 95
---------	------------------



3000	hdg 240°	IAH R-270	LUCEP INT	MKAYE INT I-JYV 23.1	VANNN INT I-JYV 28.1	
VGSi and ILS glidepath not coincident (VGSi Angle 3.00/TCH 71).		JEPNI I-JYV 7.6	KERNIS I-JYV 11.6	GRIEG I-JYV 18.9		
IM 190		2000	2000	267°	7000	
GS 3.00° TCH 56		3000	5000	7000		
-1042-		5.8 NM	4.1 NM	7.2 NM	4.3 NM	5 NM
CATEGORY	A	B	C	D		
S-ILS 26L	CAT II RA 100/12		100 DA 195			
S-ILS 26L	CAT III RVR 06					

## CATEGORY II & III ILS - SPECIAL AIRCREW & AIRCRAFT CERTIFICATION REQUIRED

TDZ/CL Rwsy 8R, 8L, 15R, 26R, 26L, 27 and 33L  
HIRL all Rwsy

SC-5, 28 NOV 2024 to 26 DEC 2024

SC-5, 28 NOV 2024 to 26 DEC 2024