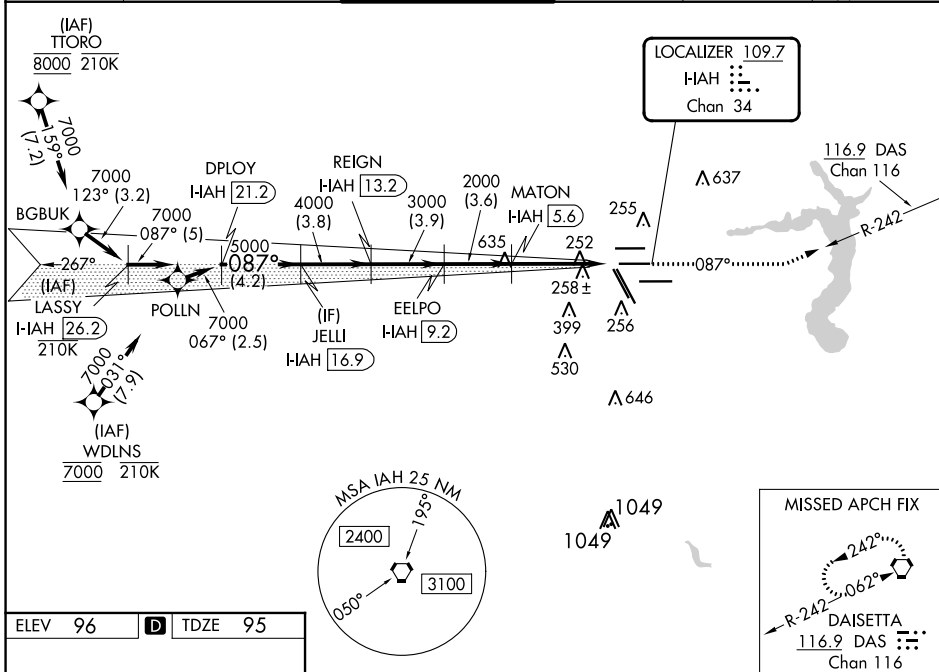


LOC/DME I-IAH 109.7 Chan 34	APP CRS 087°	Rwy Idg 9402 TDZE 95 Apt Elev 96
---	------------------------	---

ILS RWY 8R (SA CAT I & II)
GEORGE BUSH INTCNL/HOUSTON (IAH)

RNAV 1-GPS or RADAR required for procedure entry, DME.		MALSR 	MISSED APPROACH: Climb to 3000 on heading 087° and on DAS VORTAC R-242 to DAS VORTAC and hold.
Simultaneous approach authorized. SA CAT I: Requires specific OPSPEC, MSPEC, or LOA approval and use of HUD to DH. SA CAT II: Reduced lighting: requires specific OPSPEC, MSPEC, or LOA approval and use of autoland or HUD to touchdown.			

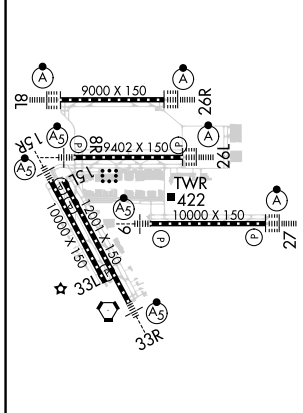
D-ATIS 124.05	HOUSTON APP CON 120.05 379.1 EAST 124.35 316.15 WEST	HOUSTON TOWER 125.35 290.2	GND CON 118.575	CLNC DEL 128.1	CPDLC A 2049
-------------------------	--	--------------------------------------	---------------------------	--------------------------	-----------------



SC-5, 28 NOV 2024 to 26 DEC 2024

SC-5, 28 NOV 2024 to 26 DEC 2024

ELEV 96	D	TDZE 95
---------	----------	---------



TDZ/CL Rwy 8R, 8L, 15R, 26R, 26L, 27 and 33L
HIRL all Rwy

VGSi and ILS glidepath not coincident (VGSi Angle 3.00/TCH 72).		3000	DAS
LASSY I-IAH [26.2]	DPLOY I-IAH [21.2]	JELLI I-IAH [16.9]	REIGN I-IAH [13.2]
EELPO I-IAH [9.2]	MATON INT I-IAH [5.6]		
7000-087° → 7000 → 5000 → 4000 → 3000 → 2000 → 1040°			
GS 3.00° TCH 55			
-5 NM -4.2 NM -3.8 -3.9 -3.6 -5.8 NM			
CATEGORY	A	B	C
S-ILS 8R	SA CAT I RA 152/14	150	DA 245
S-ILS 8R	SA CAT II RA 102/12	100	DA 195

SA CATEGORY I and II ILS SPECIAL AIRCREW & AIRCRAFT CERTIFICATION REQUIRED