

LOC/DME I-GHI <b>110.9</b> Chan <b>46</b>	APP CRS <b>267°</b>	Rwy Idg <b>10000</b> TDZE <b>86</b> Apt Elev <b>96</b>
---	------------------------	--

# ILS or LOC RWY 27

GEORGE BUSH INTCNL/HOUSTON (IAH)

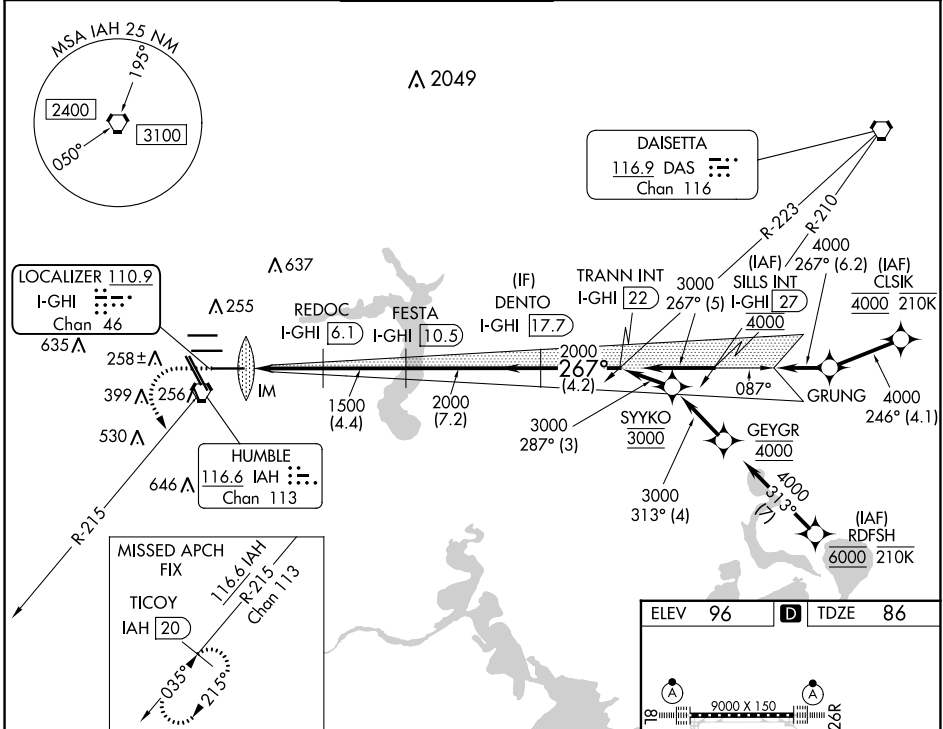
RNAV 1-GPS or RADAR required for procedure entry.  
DME required.

Simultaneous approach authorized. Use of FD or AP required during simultaneous operations. For inop ALS, increase S-ILS 27 Cat E visibility to RVR 4000 and S-LOC 27 Cat C-E visibility to 1 1/8 SM.

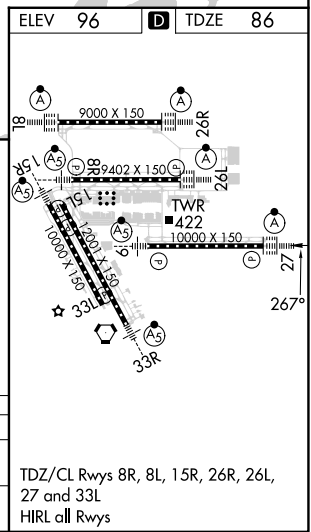
ALSF-2

MISSED APPROACH: Climb to 560 then climbing left turn to 3000 on IAH VORTAC R-215 to TICCOY/IAH 20 DME and hold.

D-ATIS <b>124.05</b>	HOUSTON APP CON <b>120.05 379.1</b> EAST <b>124.35 316.15</b> WEST	HOUSTON TOWER <b>135.15 290.2</b>	GND CON <b>118.575</b>	CLNC DEL <b>128.1</b>	CPDLC
-------------------------	--	--------------------------------------	---------------------------	--------------------------	-------



560	3000	TICCOY IAH 20	VGSIs and ILS glidepath not coincident (VGSi Angle 3.00/TCH 70).		TRANN INT I-GHI 22			
IM		I-GHI 1.8	I-GHI 3.1	I-GHI 6.1	I-GHI 10.5	I-GHI 17.7	267°	3000
0.1		1.2	3 NM	4.4 NM	7.2 NM	4.2 NM		
CATEGORY	A	B	C	D	E			
S-ILS 27	286/18 200 (200-1/2)							
S-LOC 27	560/24	474 (500-1/2)	560/50		474 (500-1)			



SC-5, 28 NOV 2024 to 26 DEC 2024

SC-5, 28 NOV 2024 to 26 DEC 2024