

HOUSTON, TEXAS

AL-5461 (FAA)

24305

LOC/DME I-IAH <b>109.7</b> Chan <b>34</b>	APP CRS <b>087°</b>	Rwy Idg <b>9402</b> TDZE <b>95</b> Apt Elev <b>96</b>
---	------------------------	---

# ILS or LOC RWY 8R

GEORGE BUSH INTCNL/HOUSTON (IAH)

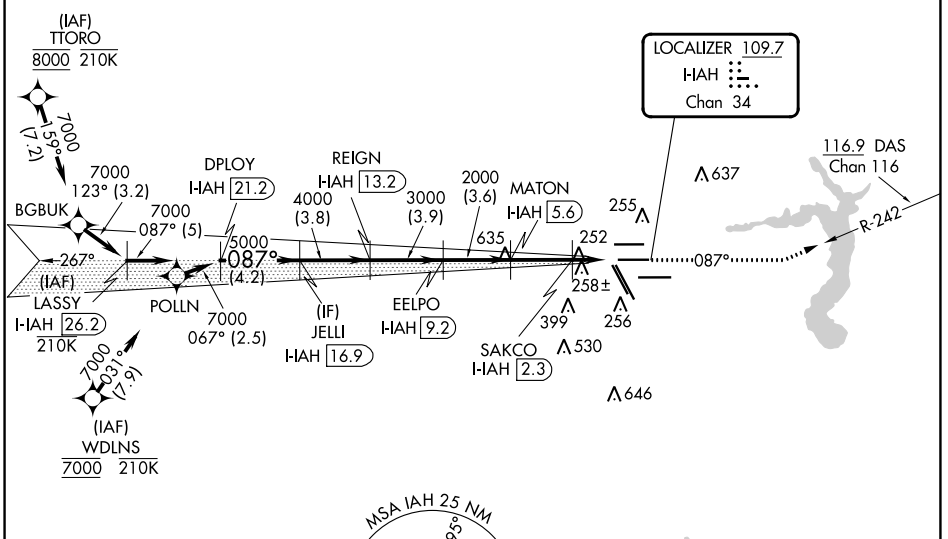
RNAV 1-GPS or RADAR required for procedure entry, DME.

Simultaneous approach authorized. For inop ALS, increase S-LOC 8R Cat C/D/E visibility to 1 $\frac{1}{2}$  SM. For inop ALS, increase S-ILS 8R Cat E visibility to RVR 4000.

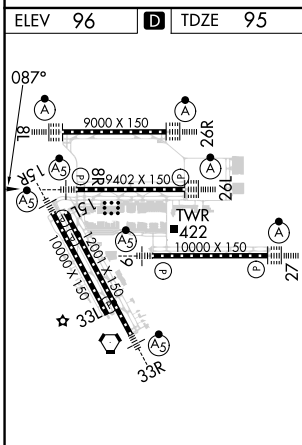
MALSRL

MISSED APPROACH: Climb to 3000 on heading 087° and on DAS VORTAC R-242 to DAS VORTAC and hold.

D-ATIS <b>124.05</b>	HOUSTON APP CON <b>120.05 379.1</b> EAST <b>124.35 316.15</b> WEST	HOUSTON TOWER <b>125.35 290.2</b>	GND CON <b>118.575</b>	CLNC DEL <b>128.1</b>	CPDLC $\Delta$ 2049
-------------------------	--	--------------------------------------	---------------------------	--------------------------	------------------------



ELEV 96	<b>D</b>	TDZE 95
---------	----------	---------



TDZ/CL Rwy's 8R, 8L, 15R, 26R, 26L, 27 and 33L  
HIRL all Rwy's



VGSi and ILS glidepath not coincident (VGSi Angle 3.00/TCH 72).							
LASSY I-IAH [26.2]	DPLY I-IAH [21.2]	JELLI I-IAH [16.9]	REIGN I-IAH [13.2]	EELPO I-IAH [9.2]	MATON I-IAH [5.6]	SAKCO I-IAH [2.3]	I-IAH DME ANTENNA [0.2]
7000	7000	5000	4000	3000	2000	*940	
GS 3.00°							
TCH 55							
-5 NM		-4.2 NM		-3.8		-3.9	
				-3.6		-3.3 NM	
						-1.3 NM	
						-1.2 NM	
CATEGORY	A	B	C	D	E		
S-ILS 8R	295/18			200 (200- $\frac{1}{2}$ )			
S-LOC 8R	560/24		465 (500- $\frac{1}{2}$ )		560/50		465 (500-1)

HOUSTON, TEXAS  
Amdt 26A 10OCT19

29°59'N-95°20'W

# ILS or LOC RWY 8R

SC-5, 28 NOV 2024 to 26 DEC 2024

SC-5, 28 NOV 2024 to 26 DEC 2024