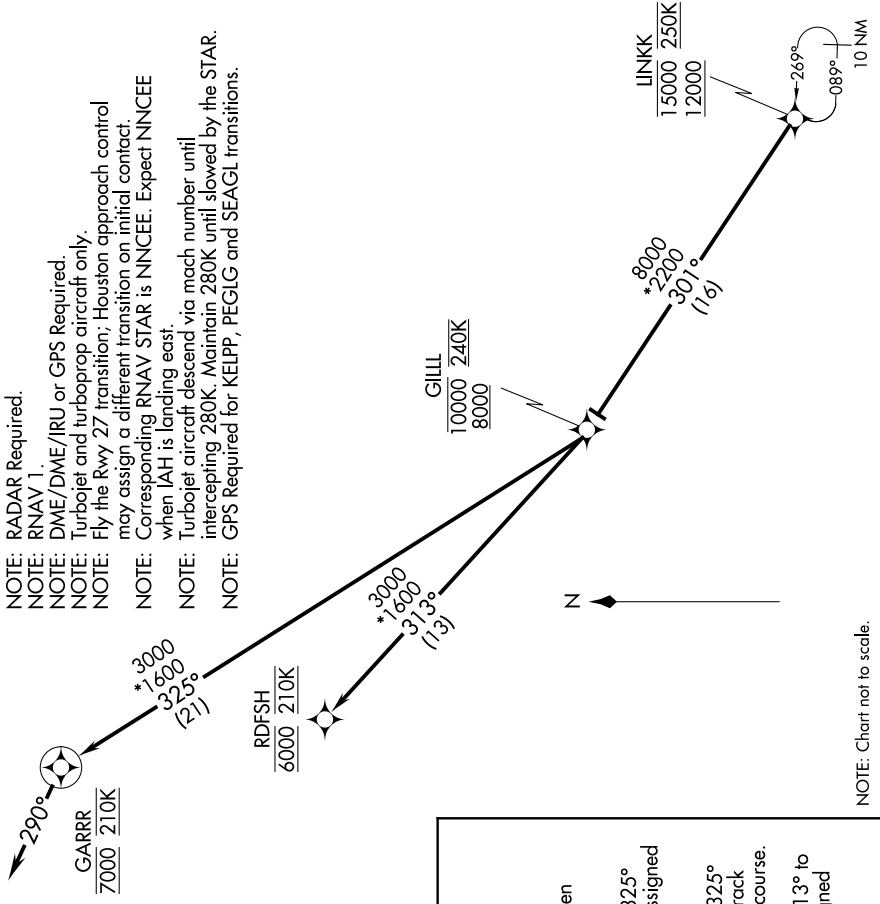


LINKK ONE ARRIVAL (RNAV) Arrival Routes

SC-5, 28 NOV 2024 to 26 DEC 2024

HOUSTON.APP.CON  
119.625 226.675  
D-ATIS  
124.05



- NOTE: RADAR Required.
- NOTE: RNAV 1.
- NOTE: DME/DME/IRU or GPS Required.
- NOTE: Turboprop and turboprop aircraft only.
- NOTE: Fly the Rwy 27 transition; Houston approach control may assign a different transition on initial contact.
- NOTE: Corresponding RNAV STAR is NNCCE: Expect NNCCE when IAH is landing east.
- NOTE: Turboprop aircraft descend via mach number until intercepting 280K. Maintain 280K until slowed by the STAR.
- NOTE: GPS Required for KELPP, PEGLG and SEAGL transitions.

**ARRIVAL ROUTE DESCRIPTION**

From LINKK on track 301° to cross GILL between 8000 and 10000 and at 240K.

**LANDING RUNWAY 26L:** From GILL on track 325° to cross GARRR at 7000 and at 210K. Expect assigned instrument approach RWY 26L.

**LANDING RUNWAY 26R:** From GILL on track 325° to cross GARRR at 7000 and at 210K, then on track 290° at 210K. Expect vectors to final approach course.

**LANDING RUNWAY 27:** From GILL on track 313° to cross RDFSH at 6000 and at 210K. Expect assigned instrument approach RWY 27.

NOTE: Chart not to scale.

SC-5, 28 NOV 2024 to 26 DEC 2024