

TOP ALTITUDE:
16000

RNAV 1 - DME/DME/IRU or GPS required.

RADAR required.

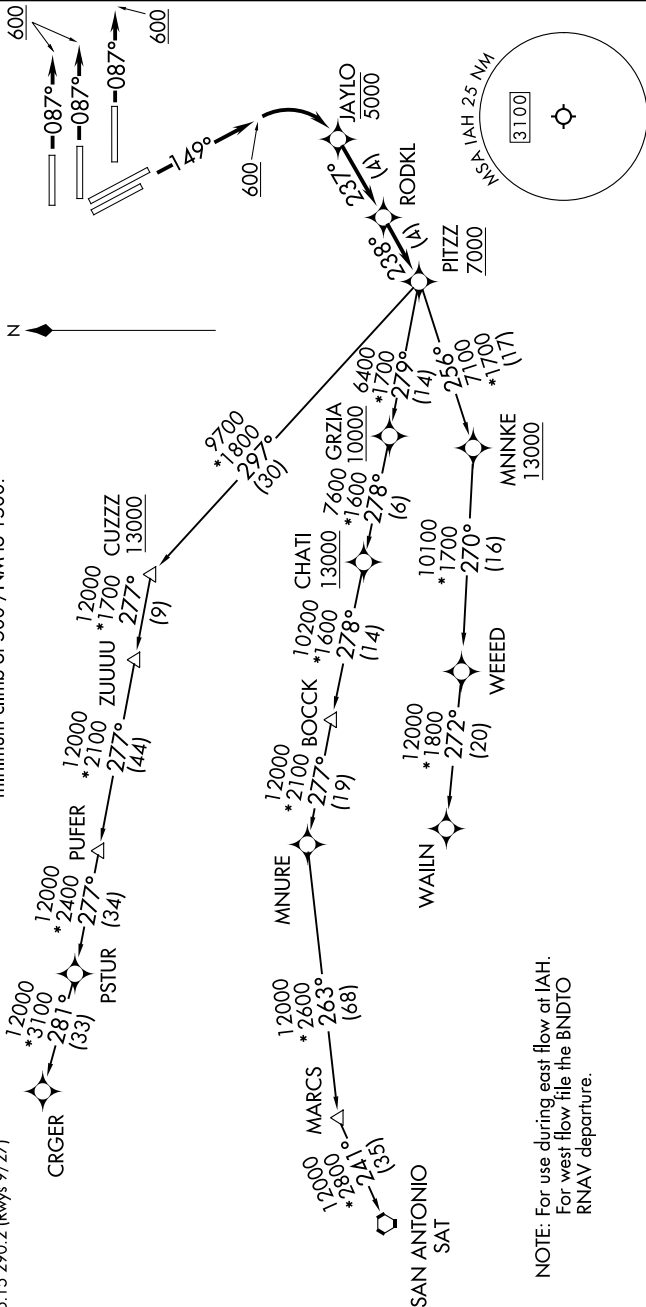
RADAR required for non - GPS equipped aircraft.

SC-5, 28 NOV 2024 to 26 DEC 2024

HOUSTON DEP CON 126.675 339.8
 D-ATIS 124.05
 CLNC DEL 128.1
 CPDLC
 GND CON
 118.575 (Rwys 8L/R, 26L/R, 9/27)
 121.7 (Rwys 15L/R, 33L/R)
 HOUSTON TOWER
 120.725 290.2 (Rwys 8L/26R)
 125.35 290.2 (Rwys 8R/26L)
 127.3 288.25 (Rwys 15L/R, 33L/R)
 135.15 290.2 (Rwys 9/27)

TAKEOFF MINIMUMS

Rwys 8L/R, 9, 15L/R: Standard with
minimum climb of 500'/NM to 1500.



NOTE: For use during east flow at IAH.
For west flow file the BNDTO
RNAV departure.

(CONTINUED ON FOLLOWING PAGE)

NOTE: Chart not to scale.

SC-5, 28 NOV 2024 to 26 DEC 2024