

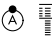
APP CRS	Rwy Idg	9402
267°	TDZE	95
	Apt Elev	96

RNAV (RNP) Y RWY 26L

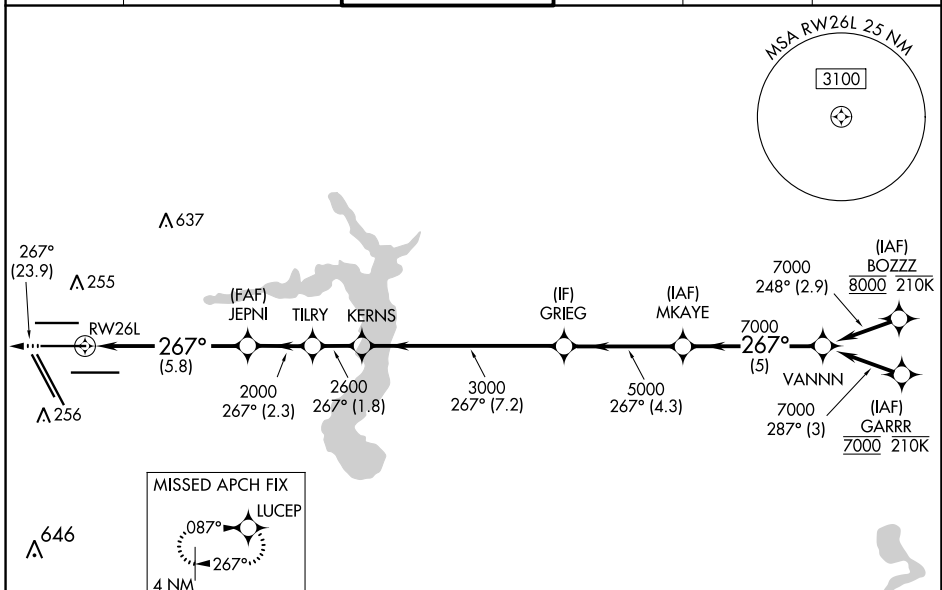
GEORGE BUSH INTCNL/HOUSTON (IAH)

RNP AR APCH - GPS.

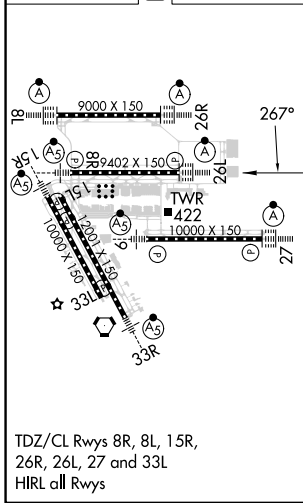
▼ For uncompensated Baro-VNAV systems, procedure NA below -3°C or above 54°C. Simultaneous approach authorized. For inop ALS, increase RNP 0.13 all Cats visibility to RVR 5100, and RNP 0.30 all Cats visibility to 1½ SM.

ALSF-2  MISSED APPROACH: Climb to 3000 on track 267° to LUCEP and hold.

D-ATIS	HOUSTON APP CON	HOUSTON TOWER	GND CON	CLNC DEL	CPDLC
124.05	120.05 379.1 EAST 124.35 316.15 WEST	125.35 290.2	118.575	128.1	



ELEV	96	D	TDZE	95
------	-----------	----------	------	-----------




3000 LUCEP  VGSi and RNAV glidepath not coincident (VGSi Angle 3.00°/TCH 71°).

Diagram showing the VGSi and RNAV glidepaths. Key altitudes and distances are: 2000 (5.8 NM), 2600 (2.3 NM), 3000 (7.2 NM), 5000 (4.3 NM), 7000 (5 NM).

CATEGORY	A	B	C	D
RNP 0.13 DA		414/40	319 (400-¾)	
RNP 0.30 DA		549/55	454 (500-1)	

AUTHORIZATION REQUIRED

SC-5, 28 NOV 2024 to 26 DEC 2024

SC-5, 28 NOV 2024 to 26 DEC 2024