

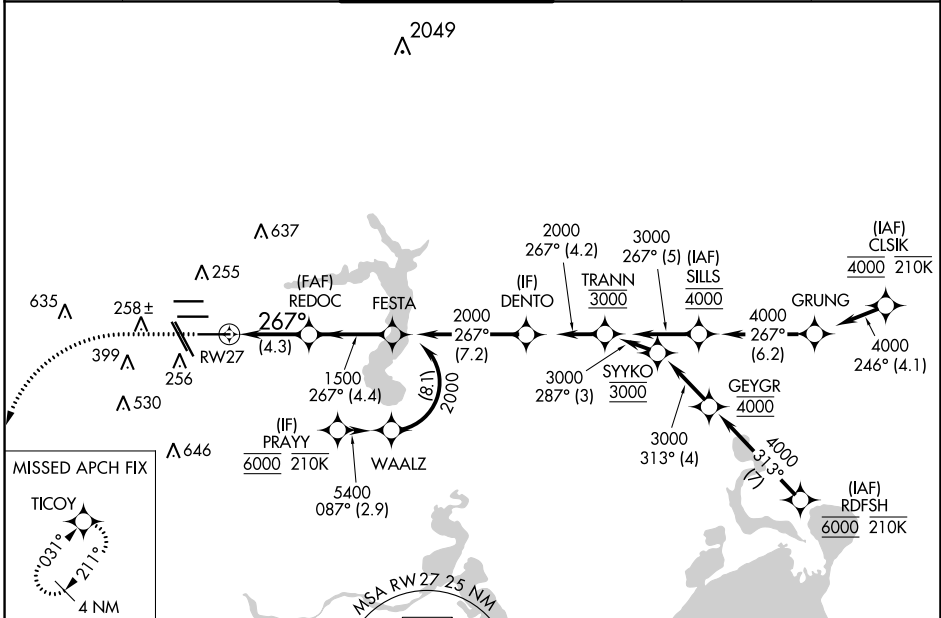
APP CRS	Rwy Idg	10000
267°	TDZE	86
	Apt Elev	96

RNAV (RNP) Y RWY 27

GEORGE BUSH INTCNTL/HOUSTON (IAH)

RNP AR APCH - GPS.	<p>Simultaneous approach authorized. Use of FD or AP required during simultaneous operations. For uncompensated Baro-VNAV systems, procedure NA below -2°C or above 54°C. For inop ALS, increase RNP 0.30 all Cats visibility to RVR 4500.</p>	<p>ALSf-2</p>	<p>MISSED APPROACH: Climb to 560 then climbing left turn to 3000 direct TICOY and hold.</p>
--------------------	--	---------------	---

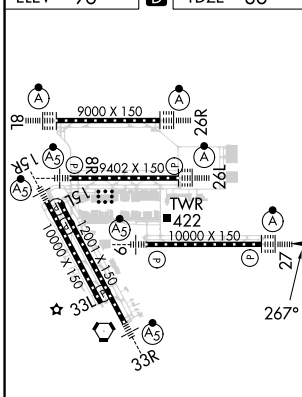
D-ATIS 124.05	HOUSTON APP CON 120.05 379.1 EAST 124.35 316.15 WEST	HOUSTON TOWER 135.15 290.2	GND CON 118.575	CLNC DEL 128.1	CPDLC
-------------------------	--	--------------------------------------	---------------------------	--------------------------	-------



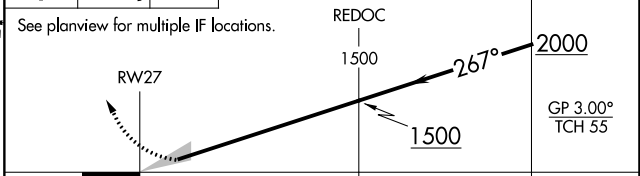
SC-5, 28 NOV 2024 to 26 DEC 2024

SC-5, 28 NOV 2024 to 26 DEC 2024

ELEV 96	D	TDZE 86
---------	----------	---------



560 3000 TICOY VGSI and RNAV glidepath not coincident (VGSI Angle 3.00/TCH 70).



CATEGORY	A	B	C	D
RNP 0.30 DA		380/24	294 (300-1/2)	

TDZ/CL Rwy 8L, 8R, 15R, 26R, 26L, 27 and 33L
HIRL all Rwy

AUTHORIZATION REQUIRED