

TEJAS FIVE ARRIVAL (RNAV) Transition Routes

HOUSTON, TEXAS

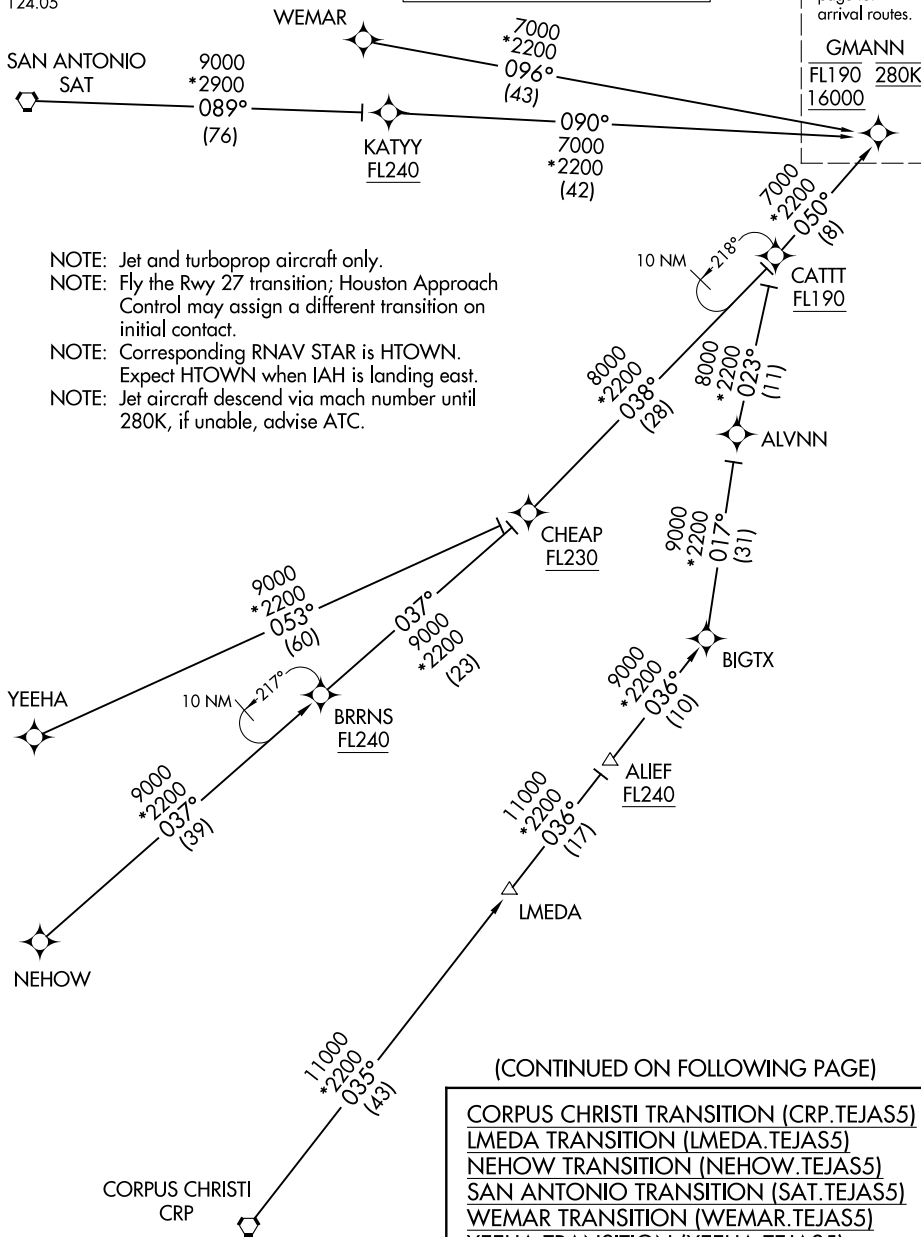
HOUSTON APP CON
119.175 291.675
D-ATIS
124.05

RNAV 1 - DME/DME/IRU or GPS.

RADAR required.

See following page for arrival routes.

GMANN
FL190 280K
16000



- NOTE: Jet and turboprop aircraft only.
- NOTE: Fly the Rwy 27 transition; Houston Approach Control may assign a different transition on initial contact.
- NOTE: Corresponding RNAV STAR is HTOWN. Expect HTOWN when IAH is landing east.
- NOTE: Jet aircraft descend via mach number until 280K, if unable, advise ATC.

(CONTINUED ON FOLLOWING PAGE)

CORPUS CHRISTI TRANSITION (CRP.TEJAS5)
LMEDA TRANSITION (LMEDA.TEJAS5)
NEHOW TRANSITION (NEHOW.TEJAS5)
SAN ANTONIO TRANSITION (SAT.TEJAS5)
WEMAR TRANSITION (WEMAR.TEJAS5)
YEEHA TRANSITION (YEEHA.TEJAS5)

NOTE: Chart not to scale.

SC-5, 28 NOV 2024 to 26 DEC 2024

SC-5, 28 NOV 2024 to 26 DEC 2024

TEJAS FIVE ARRIVAL (RNAV) Transition Routes

HOUSTON, TEXAS