

EC-1, 28 NOV 2024 to 26 DEC 2024

**TOP ALTITUDE:
ASSIGNED BY ATC**

RNAV-1 DME/DME/IRU or GPS.
RADAR required.

DETROIT DEP CON 118.95 284.0
ATIS 134.55
CINC DEL 121.6
GND CON 121.6
ANN ARBOR TOWER ★ 120.3 (CTAF)

DEPARTURE ROUTE DESCRIPTION

TAKEOFF RUNWAY 6: Climb on heading 060° or as assigned by ATC, thence....

TAKEOFF RUNWAY 24: Climb on heading 240° or as assigned by ATC, thence....

....for RADAR vectors to JWELS, then on track 218° to SNDRS, then on (transition). Maintain ATC assigned altitude, expect filed altitude 10 minutes after departure.

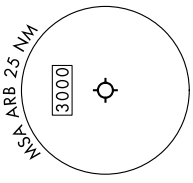
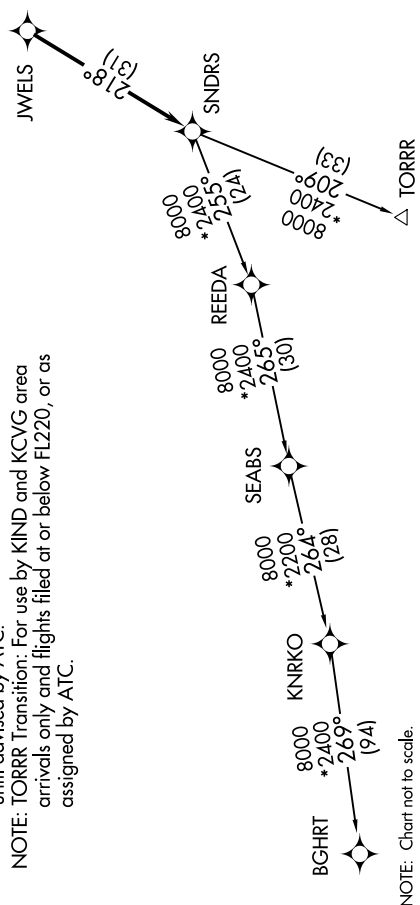
BGHR T TRANSITION (SNDRS3.BGHRT):

TORRR TRANSITION (SNDRS3.TORRR):

NOTE: Turbojet departures at/above 10000, maintain 280K until advised by ATC.

NOTE: TORRR Transition: For use by KIND and KCVG area arrivals only and flights filed at or below FL220, or as assigned by ATC.

TAKEOFF MINIMUMS:
Rwys 6, 24: Standard.
Rwys 12, 30: NA - Environmental.



EC-1, 28 NOV 2024 to 26 DEC 2024

NOTE: Chart not to scale.