

(DAWNN1.DAWNN) 23334
DAWNN ONE DEPARTURE

AL-5514 (FAA)

SHELBYVILLE MUNI (G EZ)
 SHELBYVILLE, INDIANA

ASOS
 121.55
 INDIANAPOLIS DEP CON
 127.15 317.8

BRICKYARD
 116.3 VHP
 Chan 110

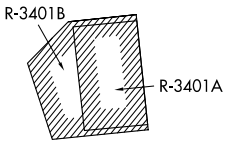
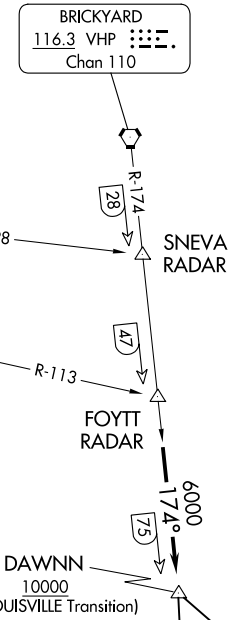
**TOP ALTITUDE:
 ASSIGNED BY ATC**

TERRE HAUTE
 115.3 TTH
 Chan 100

TAKEOFF MINIMUMS:
 Rwy 1, 19: Standard.
 Rwy 9, 27: NA - Environmental

HOOSIER
 110.2 OOM
 Chan 39

EC-2, 28 NOV 2024 to 26 DEC 2024



LOUISVILLE
 114.8 IU
 Chan 95

MYSTIC
 108.2 MYS

- NOTE: RADAR required.
- NOTE: Select appropriate localizer/DME frequency/channel prior to departure.
- NOTE: Turbojets accelerate to 250K until reaching 10000, if unable advise ATC.
- NOTE: Assigned to aircraft with a requested altitude of 11000 or above.

(NARRATIVE ON FOLLOWING PAGE)

NOTE: Chart not to scale.

EC-2, 28 NOV 2024 to 26 DEC 2024

DAWNN ONE DEPARTURE
 (DAWNN1.DAWNN) 07DEC17

SHELBYVILLE, INDIANA
 SHELBYVILLE MUNI (G EZ)