


WAAS CH <b>42605</b> <b>W05A</b>	APP CRS <b>044°</b>	Rwy Idg <b>5370</b> TDZE <b>1275</b> Apt Elev <b>1277</b>
--	------------------------	---

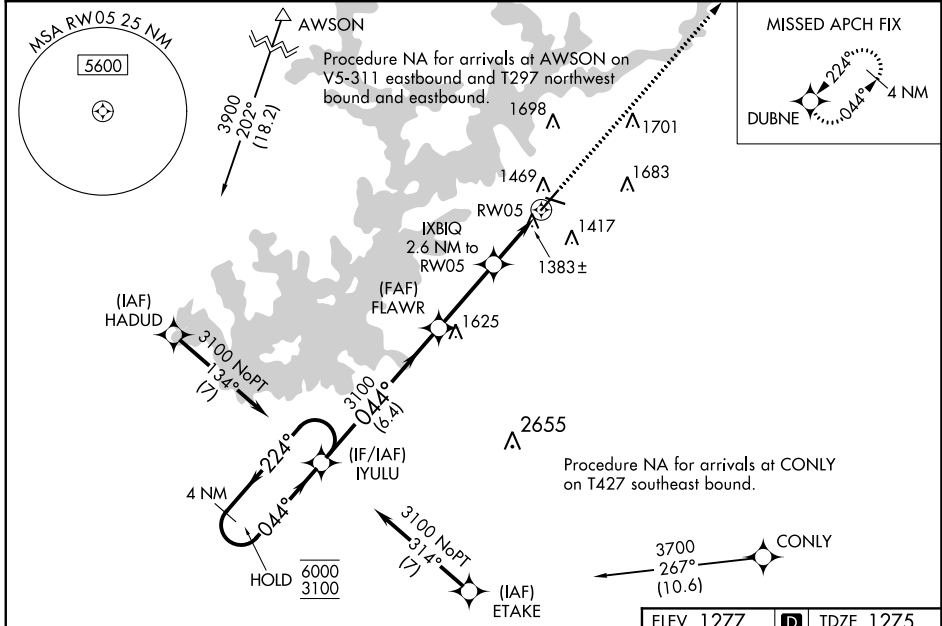
# RNAV (GPS) RWY 5

LEE GILMER MEML (GVL)

RNP APCH - GPS.


**MALS R**  MISSED APPROACH: Climb to 3500 direct DUBNE and hold.

ASOS <b>126.475</b>	ATLANTA APP CON* <b>132.475 291.1</b>	UNICOM <b>123.075 (CTAF)</b> 
------------------------	--	---



SE-4, 28 NOV 2024 to 26 DEC 2024


SE-4, 28 NOV 2024 to 26 DEC 2024

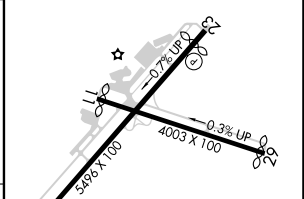
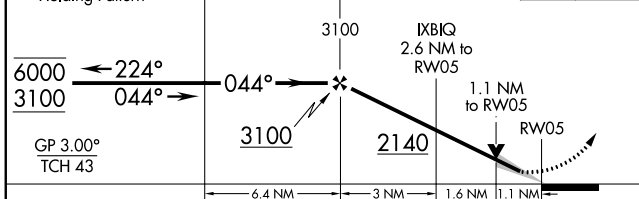
ELEV 1277  TDZE 1275

VGSI and RNAV glidepath not coincident (VGSI Angle 3.00/TCH 30).

4 NM Holding Pattern

GP 3.00° TCH 43

3500 DUBNE 



CATEGORY	A	B	C	D
LPV DA		1475-1/2	200 (200-1/2)	
LNAV/VNAV DA		1551-1/2	276 (300-1/2)	
LNAV MDA	1640-1/2	365 (400-1/2)	1640-5/8	365 (400-5/8)
CIRCLING	1780-1 503 (600-1)	2000-1 723 (800-1)	2000-2 723 (800-2)	2020-2 1/2 743 (800-2 1/2)

HIRL Rwy 5-23 