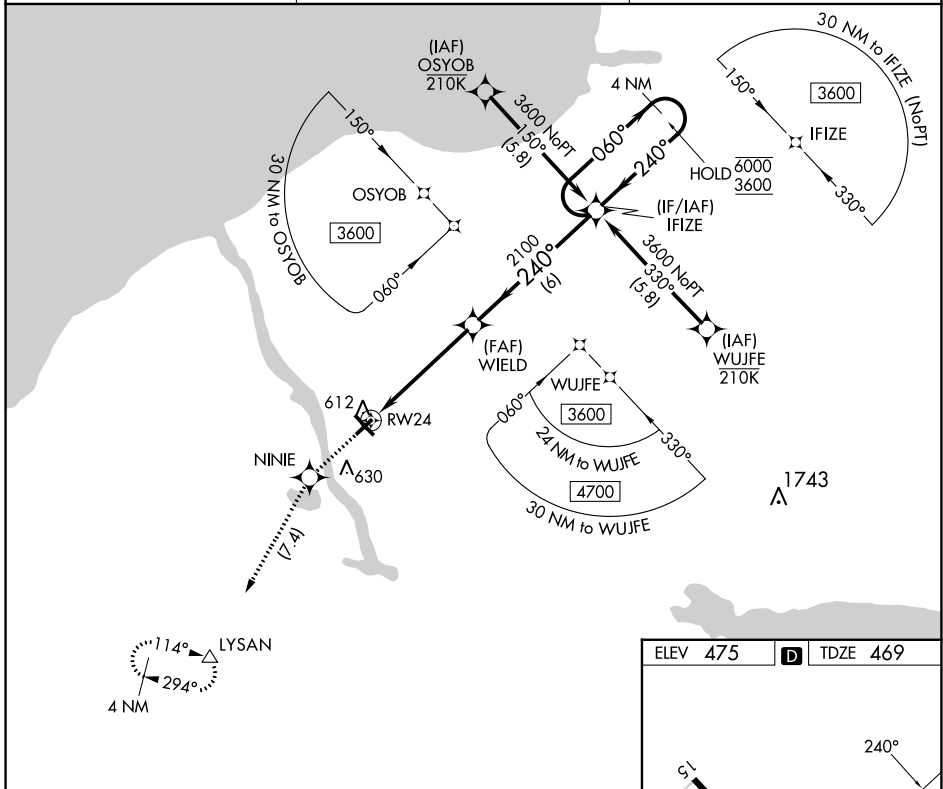


APP CRS <b>240°</b>	Rwy Idg TDZE Apt Elev	<b>3997</b> <b>469</b> <b>475</b>
------------------------	-----------------------------	---

# RNAV (GPS) RWY 24

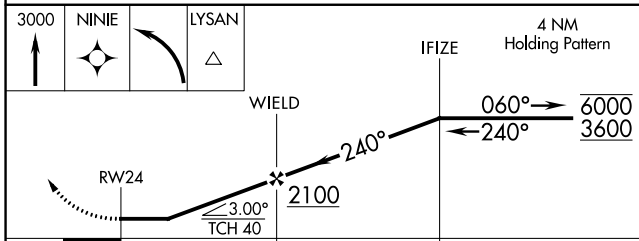
OSWEGO COUNTY (FZY)

RNP APCH - GPS.		MISSED APPROACH: Climb to 3000 direct NINIE and left turn direct LYSAN and hold, continue climb-in-hold to 3000.
Rwy 24 helicopter visibility reduction below 1 SM NA.		
ASOS <b>119.275</b>	SYRACUSE APP CON <b>126.125 269.125</b>	UNICOM <b>123.0 (CTAF) 0</b>

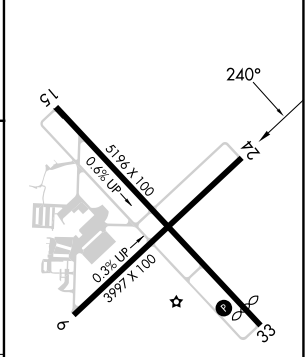


NE-2, 28 NOV 2024 to 26 DEC 2024

NE-2, 28 NOV 2024 to 26 DEC 2024



ELEV 475	D	TDZE 469
----------	---	----------



CATEGORY	A	B	C	D
LNVA MDA	960-1	491 (500-1)	960-1 $\frac{3}{8}$	491 (500-1 $\frac{3}{8}$ )
CIRCLING	960-1	485 (500-1)	960-1 $\frac{1}{2}$	1040-2
			485 (500-1 $\frac{1}{2}$ )	565 (600-2)

- MIRL Rwy 6-24 0
- HIRL Rwy 15-33 0
- REIL Rwy 15 and 33 0
- REIL Rwy 6 and 24