

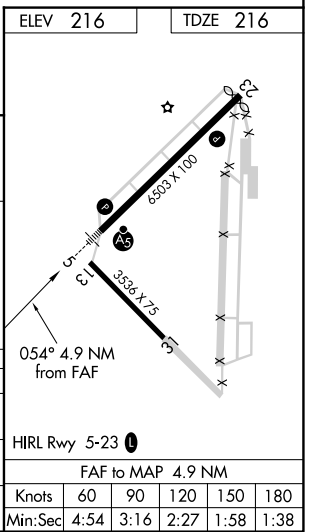
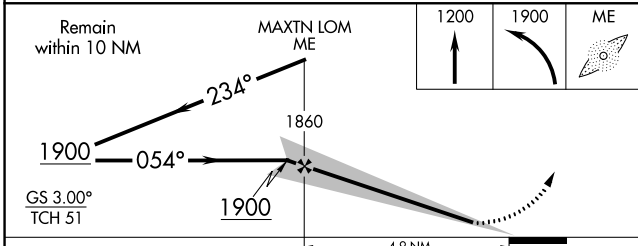
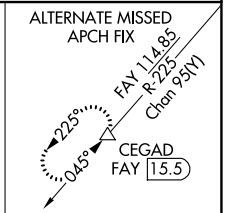
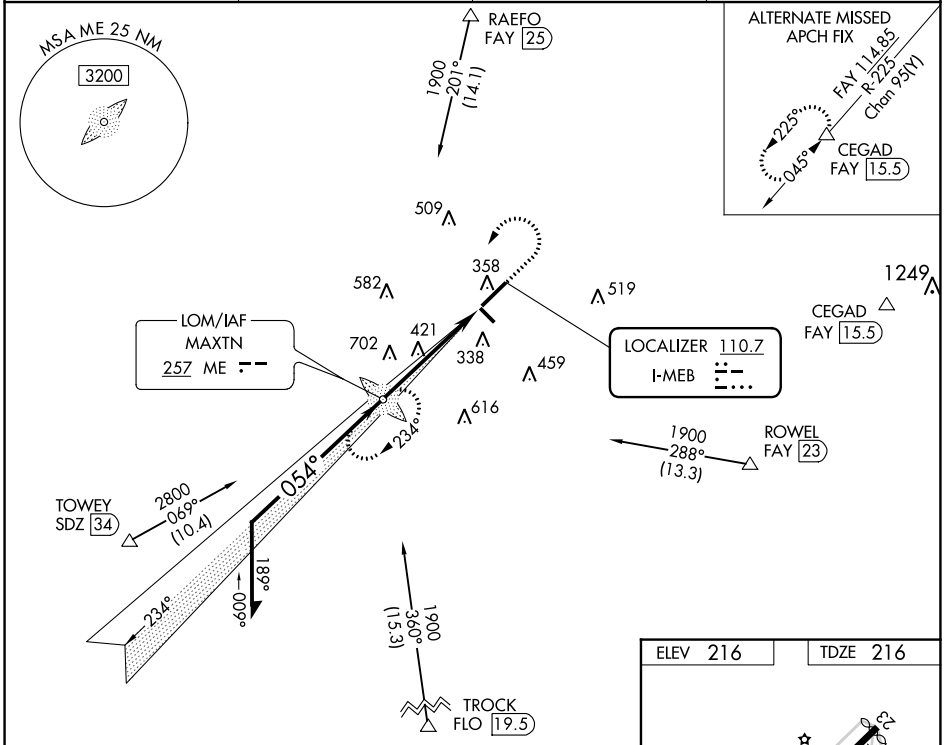
LOC I-MEB <b>110.7</b>	APP CRS <b>054°</b>	Rwy ldg TDZE Apt Elev <b>6503</b> <b>216</b> <b>216</b>
---------------------------	------------------------	--

# ILS or LOC RWY 5

LAURINBURG/MAXTON (MEB)

ADF required for procedure entry. ADF required.	MALSR 	MISSED APPROACH: Climb to 1200 then climbing left turn to 1900 direct MAXTON LOM and hold.
Circling Rwy 13 and 31 NA at night. For inop ALS, increase S-LOC 5 Cat C/D visibility to 1 1/2 SM.		

ASOS <b>134.125</b>	FAYETTEVILLE APP CON <b>127.8 343.725</b>	GCO <b>135.075</b>	UNICOM <b>122.8 (CTAF) 0</b>
------------------------	--	-----------------------	---------------------------------



CATEGORY	A	B	C	D
S-ILS 5	416-1/2		200 (200-1/2)	
S-LOC 5	680-1/2	464 (500-1/2)	680-1	464 (500-1)
CIRCLING	740-1	524 (600-1)	780-1 1/2 564 (600-1 1/2)	1020-2 1/2 804 (900-2 1/2)

SE-2, 28 NOV 2024 to 26 DEC 2024

SE-2, 28 NOV 2024 to 26 DEC 2024