

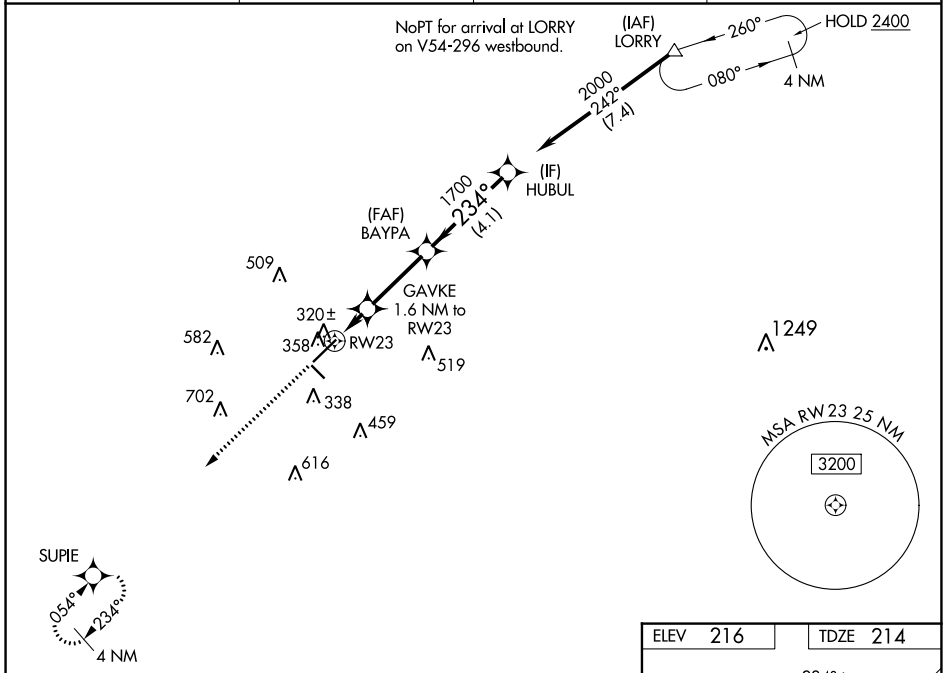
WAAS CH <b>61023</b> <b>W23A</b>	APP CRS <b>234°</b>	Rwy Idg TDZE <b>214</b> Apt Elev <b>216</b>	<b>6316</b>
--	------------------------	---	-------------

# RNAV (GPS) RWY 23

LAURINBURG/MAXTON (MEB)

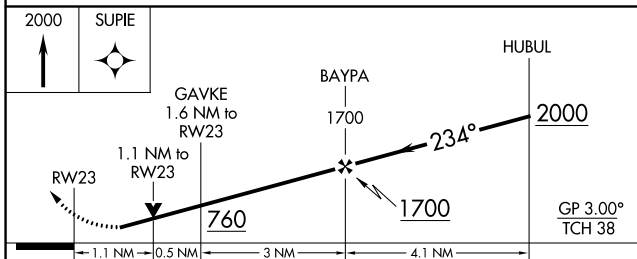
RNP APCH-GPS.		MISSED APPROACH: Climb to 2000 direct SUPIE and hold.
<p><b>▽</b> Circling to Rwy 13 and 31 NA at night. Rwy 23 helicopter visibility reduction below 3/4 SM NA. For uncompensated Baro-VNAV systems, LNAV/VNAV NA below -11°C or above 54°C.</p> <p><b>▲</b></p>		

ASOS <b>134.125</b>	FAYETTEVILLE APP CON <b>127.8 343.725</b>	GCO <b>135.075</b>	UNICOM <b>122.8 (CTAF) 0</b>
------------------------	--	-----------------------	---------------------------------



SE-2, 28 NOV 2024 to 26 DEC 2024

SE-2, 28 NOV 2024 to 26 DEC 2024



CATEGORY	A	B	C	D
LPV DA		483-7/8	269 (300-7/8)	
LNAV/VNAV DA		483-7/8	269 (300-7/8)	
LNAV MDA		580-1	366 (400-1)	
<b>C</b> CIRCLING	740-1	524 (600-1)	780-1 1/2 564 (600-1 1/2)	1020-2 1/2 804 (900-2 1/2)

