

|             |          |             |
|-------------|----------|-------------|
| APP CRS     | Rwy Idg  | <b>5000</b> |
| <b>033°</b> | TDZE     | <b>1116</b> |
|             | Apt Elev | <b>1123</b> |

# RNAV (GPS) RWY 3

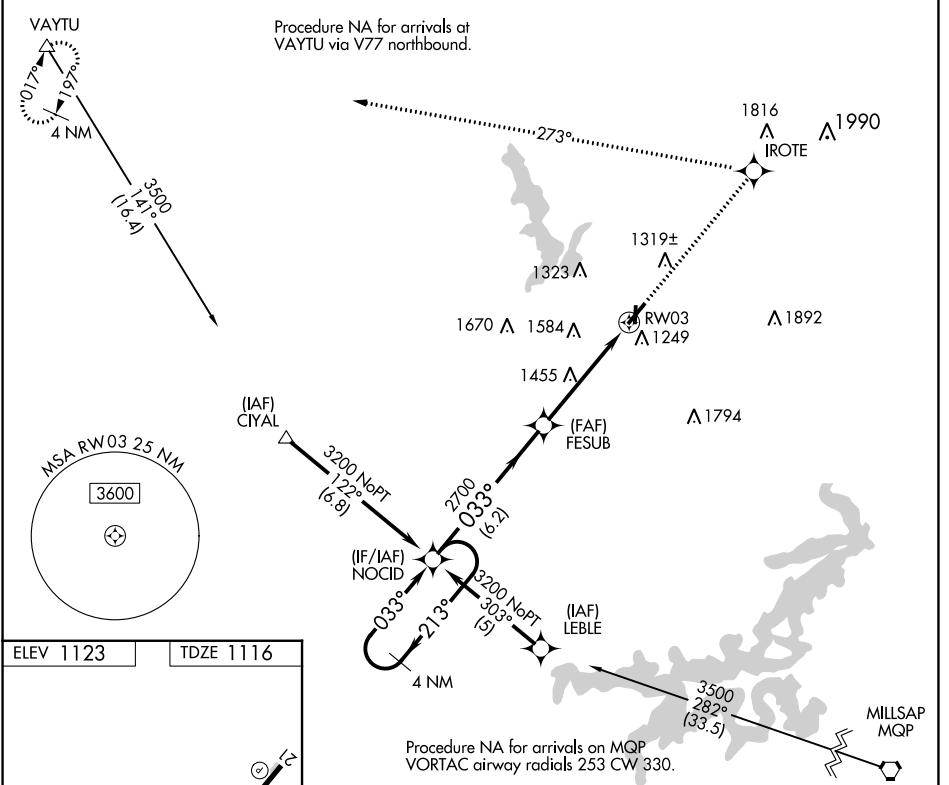
GRAHAM MUNI (RPH)

RNP APCH.

▼ When local altimeter setting not received, use Mineral Wells altimeter setting and increase all MDAs 100 feet and increase LNAV and Circling Cat B visibility 1/4 mile. Rwy 3 helicopter visibility reduction below 1 SM NA. Procedure NA at night.

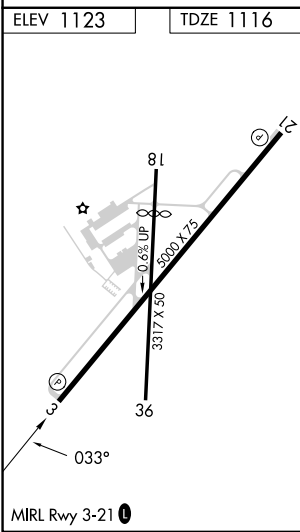
▲ MISSED APPROACH: Climb to 3900 direct IROTE and left turn via 273° track to VAYTU and hold.

|                           |   |  |
|---------------------------|---|--|
| AWOS-3P<br><b>118.025</b> | FORT WORTH CENTER<br><b>127.0 360.6</b> | UNICOM<br><b>122.975</b> (CTAF) <b>0</b> |
|---------------------------|---|--|



SC-2, 28 NOV 2024 to 26 DEC 2024

SC-2, 28 NOV 2024 to 26 DEC 2024



|                      |                             |             |         |       |
|----------------------|-----------------------------|-------------|---------|-------|
| 4 NM Holding Pattern | Visual Segment - Obstacles. |             |         |       |
|                      | 3200                        | 2700        | 3900    | VAYTU |
|                      | 213°                        | 033°        | 273° tr |       |
|                      |                             | 6.2 NM      | 4.8 NM  |       |
| CATEGORY             | A                           | B           | C       | D     |
| LNAV MDA             | 1760-1                      | 644 (700-1) | NA      |       |
| CIRCLING             | 1760-1                      | 637 (700-1) | NA      |       |