

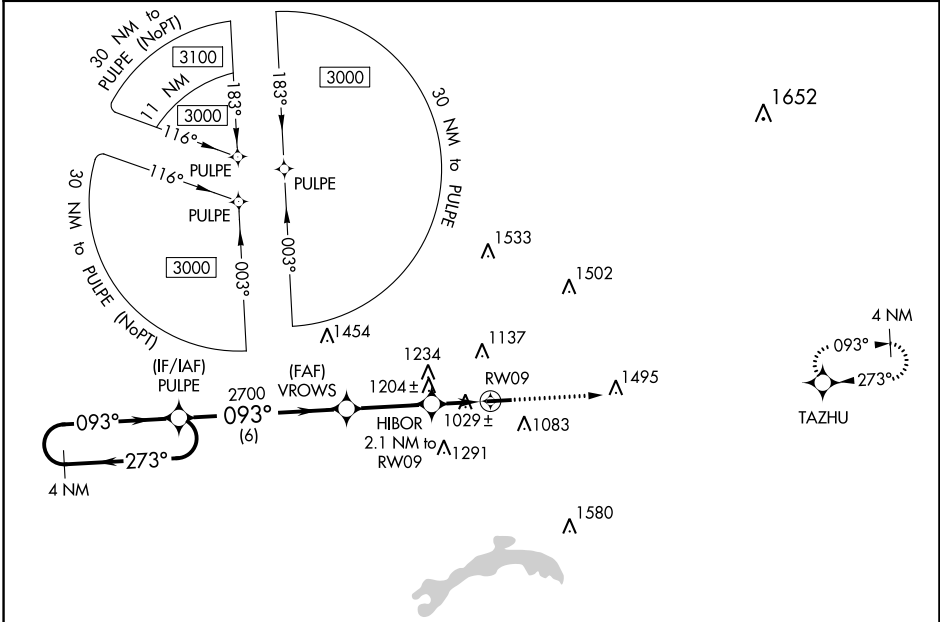
WAAS CH <b>57939</b> <b>W09A</b>	APP CRS <b>093°</b>	Rwy Idg TDZE Apt Elev	<b>4192</b> <b>884</b> <b>884</b>
--	------------------------	-----------------------------	---

# RNAV (GPS) RWY 9

LICKING COUNTY RGNL (VTA)

<p><b>▼</b> Rwy 9 helicopter visibility reduction below 1 SM NA. DME/DME RNP-0.3 NA. <b>▲</b> Straight-in Rwy 9 NA at night, Circling Rwy 9 NA at night.</p>	<p><b>MISSED APPROACH:</b> Climb to 3000 direct TAZHU and hold.</p>
--	---

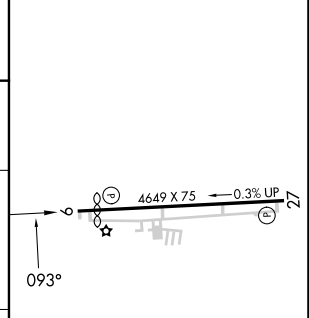
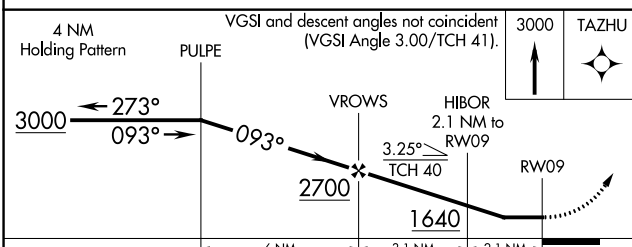
ASOS <b>121.125</b>	COLUMBUS APP CON <b>125.95 317.775</b>	CLNC DEL <b>125.175</b>	UNICOM <b>122.7 (CTAF)</b>	<b>123.3</b> <b>0</b>
------------------------	---	----------------------------	-------------------------------	-----------------------



EC-2, 28 NOV 2024 to 26 DEC 2024

EC-2, 28 NOV 2024 to 26 DEC 2024

ELEV	884	TDZE	884
------	-----	------	-----



CATEGORY		A	B	C	D
LP	MDA	1280-1	396 (400-1)	1280-1 1/8	396 (400-1 1/8)
LNAV	MDA	1460-1	576 (600-1)	1460-1 5/8	576 (600-1 5/8)
<b>C</b>	CIRCLING	1460-1 576 (600-1)	1480-1 596 (600-1)	1760-2 1/2 876 (900-2 1/2)	1760-2 3/4 876 (900-2 3/4)

MIRL Rwy 9-27 **0**  
REIL Rwy 9 and 27 **0**