

APP CRS	Rwy Idg	4352
225°	TDZE	289
	Apt Elev	290

RNAV (GPS) RWY 22

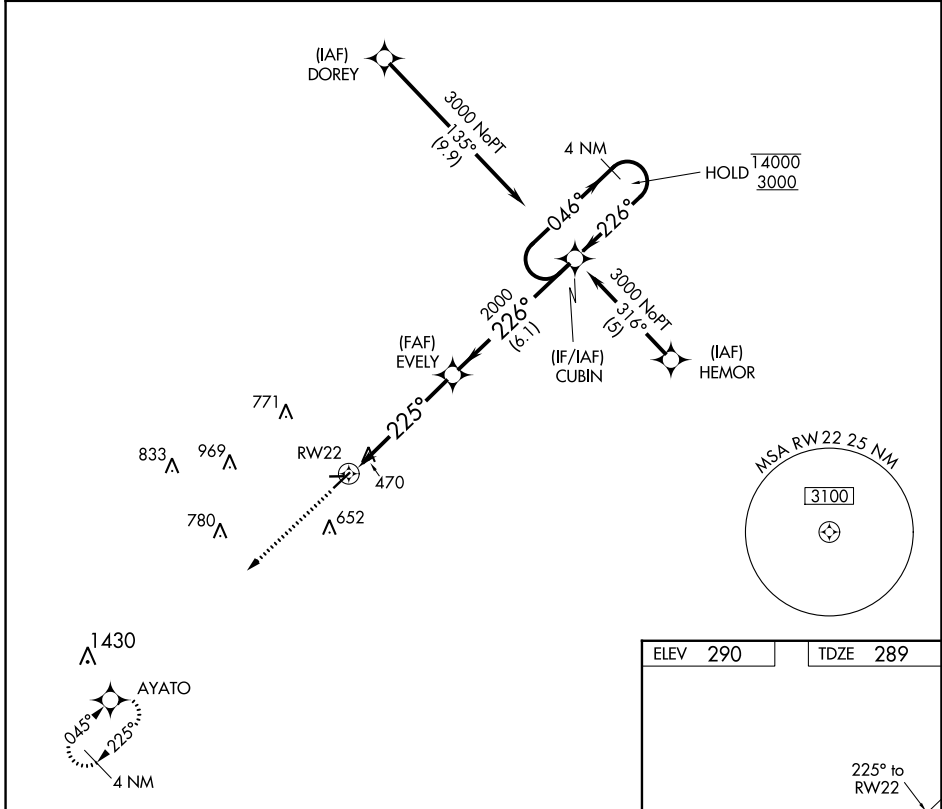
KIRK FLD (PGR)

RNP APCH - GPS

NA Circling NA to Rwys 8 and 26. Rwy 22 helicopter visibility reduction below 1/4 SM NA. Use Jonesboro altimeter setting; when not received, use Walnut Ridge altimeter setting and increase all MDA 20 feet.

MISSED APPROACH: Climb to 2500 direct AYATO and hold.

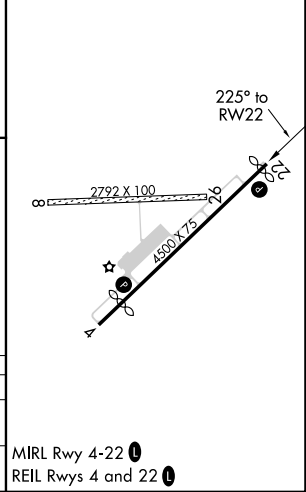
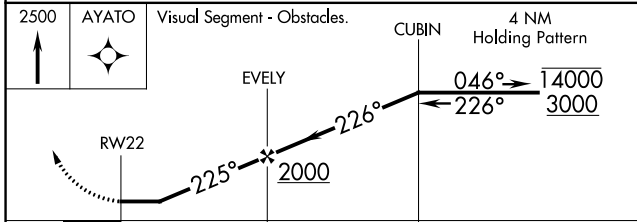
JBR ASOS 118.525	MEMPHIS CENTER 120.075 289.4	UNICOM 122.8 (CTAF) 0
----------------------------	--	---------------------------------



SC-1, 28 NOV 2024 to 26 DEC 2024

SC-1, 28 NOV 2024 to 26 DEC 2024

ELEV 290	TDZE 289
----------	----------



CATEGORY	A	B	C	D
LNVA MDA	820-1 1/4	531 (600-1 1/4)	NA	
C CIRCLING	860-1 1/4 570 (600-1 1/4)	1000-1 1/4 710 (800-1 1/4)	NA	