

WAAS CH 42521 W20A	APP CRS 202°	Rwy Idg TDZE 772 Apt Elev 772
--	------------------------	---

RNAV (GPS) RWY 20

MID-CAROLINA RGNL (RUQ)

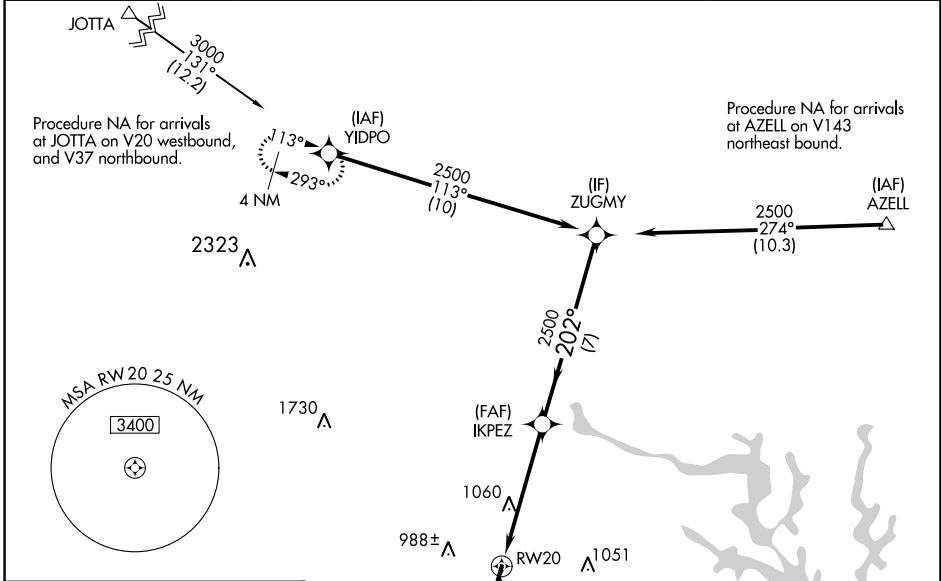
⚠ For uncompensated Baro-VNAV systems, LNAV/VNAV NA below -16° C (4°F) or above 39° C (102°F). DME/DME RNP-0.3 NA. When local altimeter setting not received, use Lexington altimeter setting and increase all DA 37 feet and all MDA 40 feet, increase LNAV Cat C and D visibility 1/8 SM and Circling Cat C visibility 1/8 SM and Circling Cat D 1/4 SM. For inop ALS when using Lexington altimeter setting, increase LNAV Cat C and D visibility to 1 1/4 SM. VDP and Baro-VNAV NA when using Lexington altimeter setting. For inop ALS, increase LNAV/VNAV visibility to 1/8 SM all Cats.

MALSR



MISSED APPROACH:
Climb to 2100 then climbing right turn to 3400 direct YIDPO and hold.

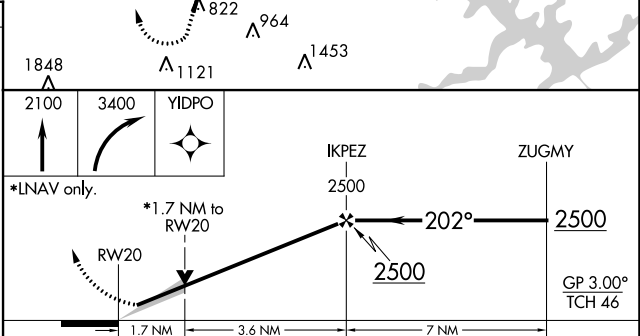
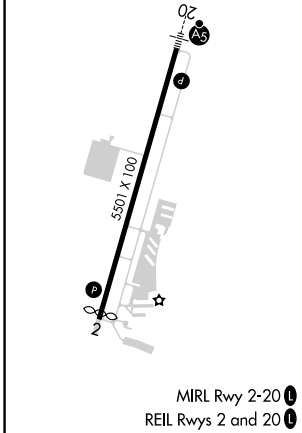
AWOS-3 118.175	CHARLOTTE APP CON 128.325 307.8	CLNC DEL 127.35	UNICOM 122.725 (CTAF) Ⓛ
--------------------------	---	---------------------------	--



SE-2, 28 NOV 2024 to 26 DEC 2024

SE-2, 28 NOV 2024 to 26 DEC 2024

ELEV 772	TDZE 772
-----------------	-----------------



CATEGORY	A	B	C	D
LPV DA		972-1/2	200 (200-1/2)	
LNAV/VNAV DA		1032-1/2	260 (300-1/2)	
LNAV MDA	1360-1/2	588 (600-1/2)	1360-1/4	588 (600-1/4)
ⓐ CIRCLING	1360-1	588 (600-1)	1440-1 3/4 668 (700-1 3/4)	1440-2 668 (700-2)