

WAAS CH 82134 W26A	APP CRS 258°	Rwy Idg TDZE Apt Elev	5000 209 239
--	------------------------	-----------------------------	---

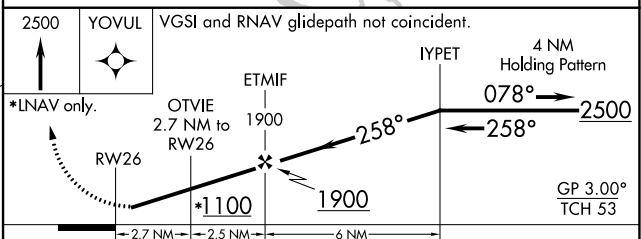
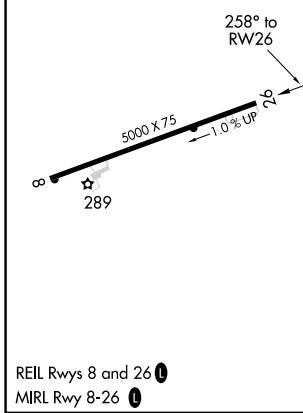
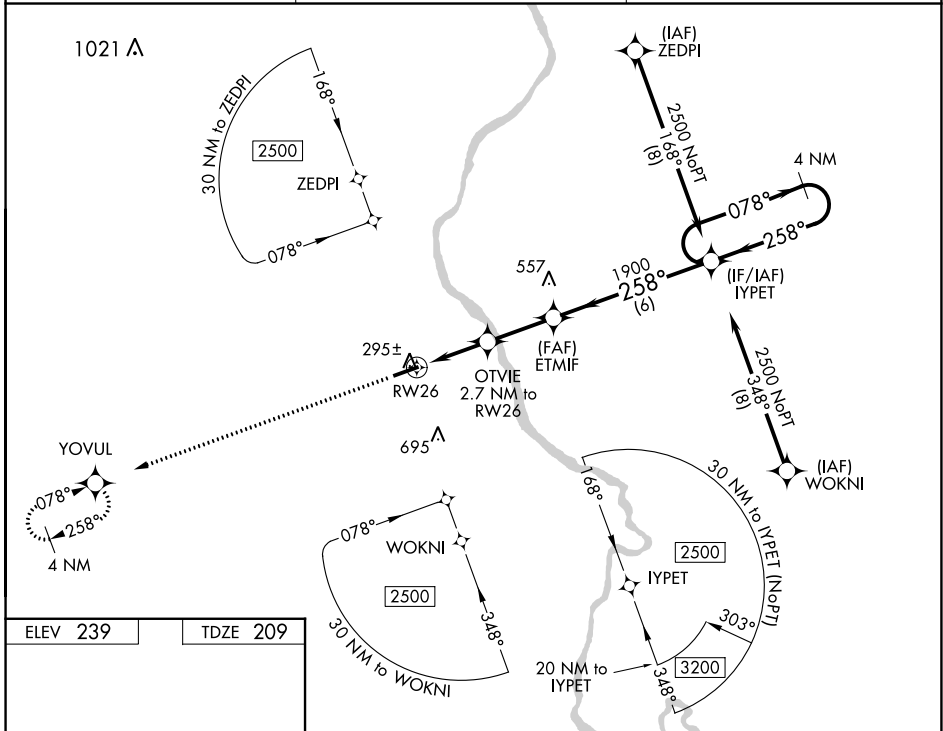
RNAV (GPS) RWY 26

CHERAW MUNI/LYNCH BELLINGER FLD (CQW)

▼ **▲** DME/DME RNP-0.3 NA. When local altimeter setting not received, use Darlington altimeter setting and increase all DA 44 feet, all MDA 60 feet, LNAV/VNAV all Cats visibility 1/8 mile, LNAV Cat C/D and Circling Cat C/D visibility 1/4 mile. Helicopter visibility reduction below 1 SM NA. For uncompensated Baro-VNAV systems, LNAV/VNAV NA below -15°C (5°F) or above 54°C (130°F). Procedure NA at night.

MISSED APPROACH: Climb to 2500 direct YOVL and hold.

AWOS-3 124.825	FLORENCE APP CON ★ 118.6 341.7	UNICOM 122.8 (CTAF) 0
--------------------------	--	---------------------------------



CATEGORY	A	B	C	D
LPV DA		459-1	250 (300-1)	
LNAV/VNAV DA		578-1½	369 (400-1½)	
LNAV MDA		560-1	351 (400-1)	
C CIRCLING	700-1 461 (500-1)		1060-2½ 821 (900-2½)	1060-2¾ 821 (900-2¾)

SE-2, 28 NOV 2024 to 26 DEC 2024

SE-2, 28 NOV 2024 to 26 DEC 2024