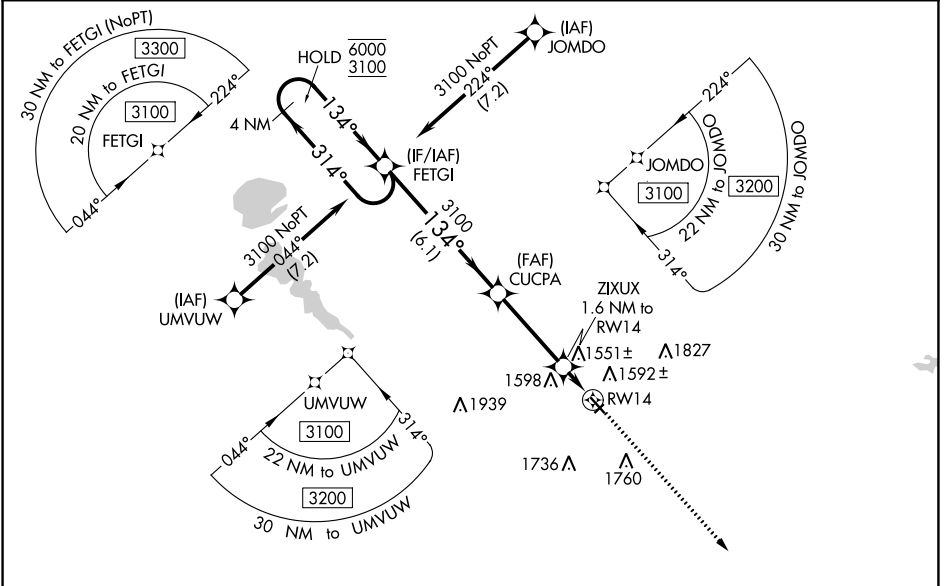


WAAS CH 62946 W14A	APP CRS 134°	Rwy Idg TDZE Apt Elev	3604 1446 1446
--	------------------------	-----------------------------	---

RNAV (GPS) RWY 14

JACKSON MUNI (MJQ)

RNP APCH - GPS.		MISSED APPROACH: Climb to 3100 direct MCQIN and hold.	
<p>▽ For uncompensated Baro-VNAV systems, LNAV/VNAV NA below -17°C or above 54°C. Circling NA to Rwy 4 and 22. Rwy 14 helicopter visibility reduction below ¾ SM NA.</p>			
AWOS-3 118.1	MINNEAPOLIS CENTER 127.75 257.7	GCO 121.725	UNICOM 122.8 (CTAF) 0



NC-1, 28 NOV 2024 to 26 DEC 2024

NC-1, 28 NOV 2024 to 26 DEC 2024

△ 2041
ELEV 1446 | TDZE 1446

REIL Rws 14 and 32 **0**
MIRL Rwy 14-32 **0**

VGSI and RNAV glidepath not coincident (VGSI Angle 3.00/TCH 26).

CATEGORY	A	B	C	D
LPV DA	1696-1	250 (300-1)		NA
LNAV/VNAV DA	1838-1½	392 (400-1½)		NA
LNAV MDA	1820-1	374 (400-1)		NA
☐ CIRCLING	2040-1	594 (600-1)		NA