

# BORRN SIX DEPARTURE (RNAV)

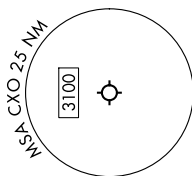
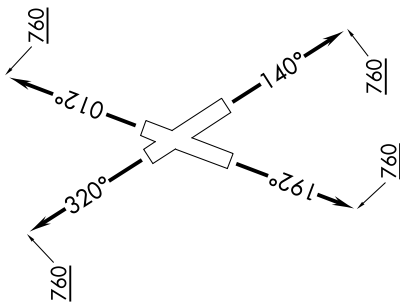
SC-5, 28 NOV 2024 to 26 DEC 2024

## TOP ALTITUDE: ASSIGNED BY ATC

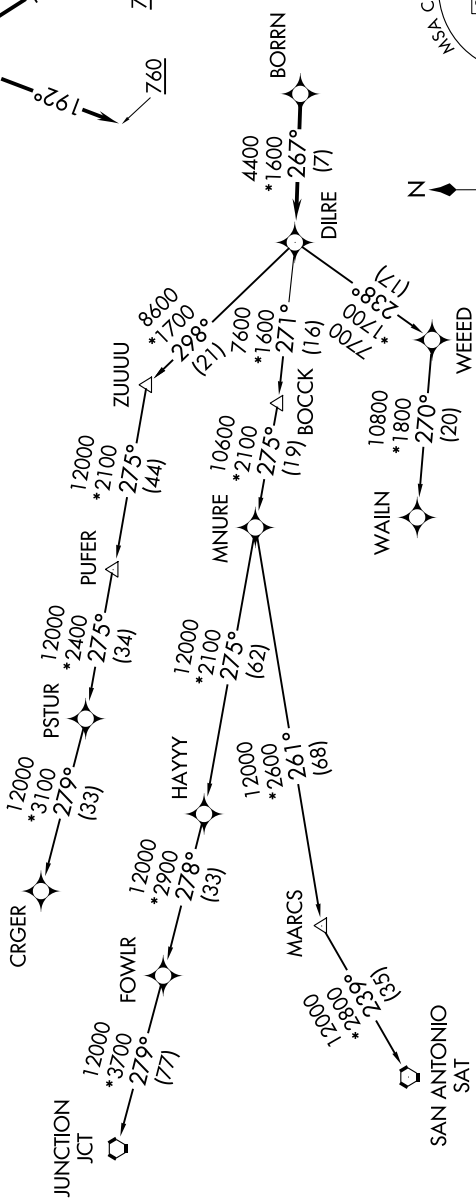
RNAV 1 - DME/DME/IRU or GPS.  
RADAR required.

- ATIS 118.325
- CINC DEL 120.45
- CINC DEL (When hvvr closed) 119.55
- GND CON 120.45
- CONROE TOWER\* 124.125 (CTAF)
- HOUSTON DEP CON 119.7 281.4

**TAKEOFF MINIMUMS**  
Rwys 1, 14, 19, 32: Standard with minimum climb of 500'/NM to 760.



NOTE: Chart not to scale.



NOTE: CRGR-TRANSITION ATC assigned only for aircraft departing 54T, AXH, EFD, GLS, HPY, IWS, LBX, LVJ, SGR, TME, T00, T41.

(NARRATIVE ON FOLLOWING PAGE)

SC-5, 28 NOV 2024 to 26 DEC 2024

# BORRN SIX DEPARTURE (RNAV)