

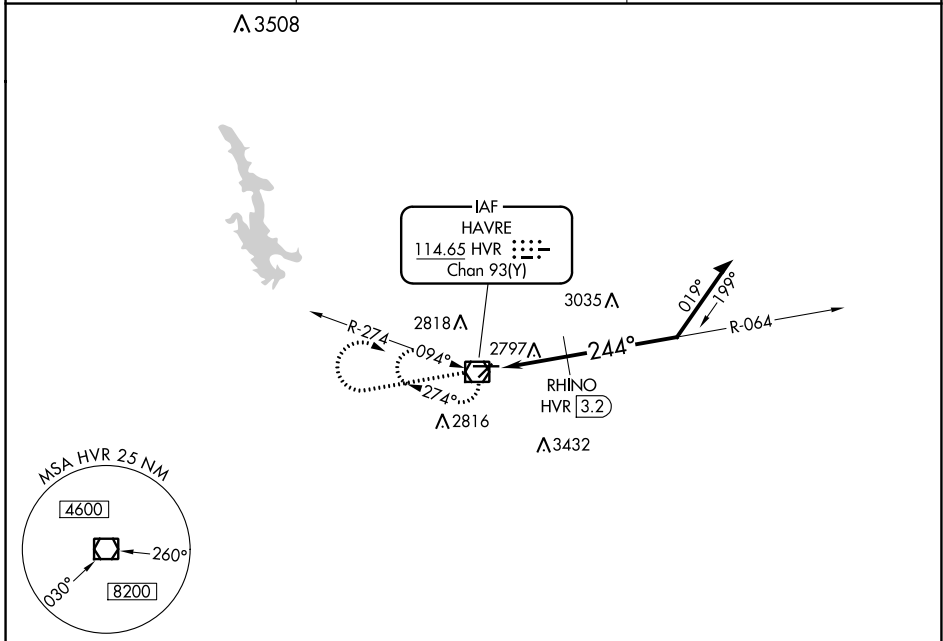
VOR/DME HVR 114.65 Chan 93(Y)	APP CRS 244°	Rwy Idg TDZE Apt Elev	5205 2586 2591
---	------------------------	-----------------------------	---

VOR RWY 26

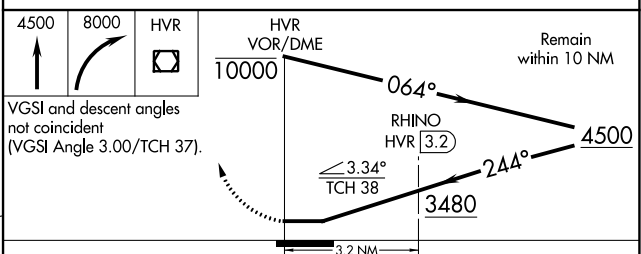
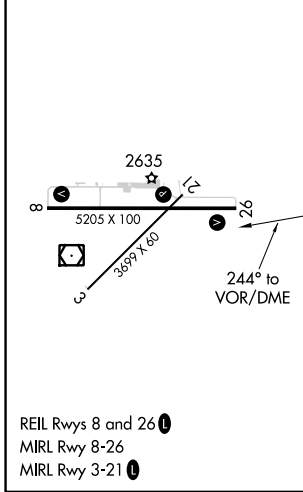
HAVRE CITY-COUNTY (HVR)

MISSED APPROACH: Climb to 4500 then climbing right turn to 8000 direct HVR VOR/DME and hold, continue climb-in-hold to 8000.

ASOS 135.225	SALT LAKE CENTER 133.4 285.4	UNICOM 122.8 (CTAF)
------------------------	--	-------------------------------



ELEV 2591	D	TDZE 2586
-----------	----------	-----------



CATEGORY	A	B	C	D
S-26	3480-1¼	894 (900-1¼)	3480-2¾ 894 (900-2¾)	3480-3 894 (900-3)
CIRCLING	3480-1¼	889 (900-1¼)	3480-2¾ 889 (900-2¾)	3740-3 1149 (1200-3)
RHINO FIX MINIMUMS				
S-26	3060-1	474 (500-1)	3060-1¼ 474 (500-1¼)	3060-1½ 474 (500-1½)
CIRCLING	3080-1 489 (500-1)	3120-1 529 (600-1)	3360-2¼ 769 (800-2¼)	3740-3 1149 (1200-3)

NW-1, 28 NOV 2024 to 26 DEC 2024

NW-1, 28 NOV 2024 to 26 DEC 2024