

WAAS CH 40207 W22A	APP CRS 221°	Rwy Idg 5175 TDZE 72 Apt Elev 72
----------------------------------------	------------------------	-------------------------------------------------------------

RNAV (GPS) RWY 22

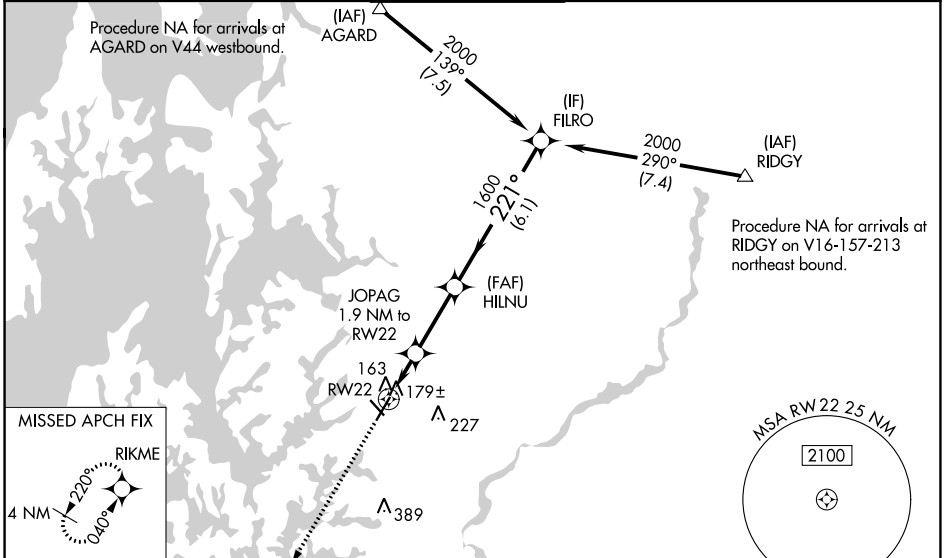
EASTON/NEWNAM FLD (E5N)

RNP APCH.

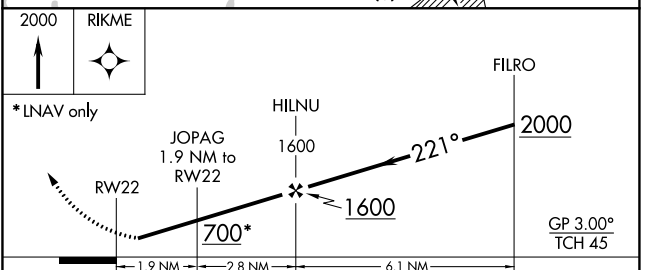
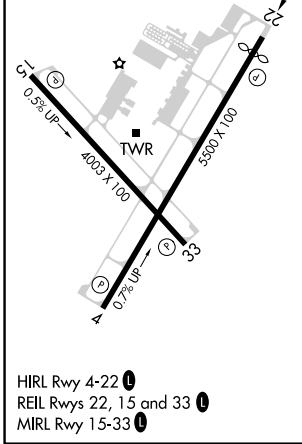
▼ Baro-VNAV NA when using Baltimore altimeter setting. For uncompensated Baro-VNAV systems, LNAV/VNAV NA below -15°C or above 43°C. Rwy 22 helicopter visibility reduction below 3/4 SM NA. When local altimeter setting not received, use Baltimore altimeter setting and increase all DA 93 feet and all MDA 100 feet; increase LPV all Cats visibility 1/2 SM, increase LNAV/VNAV all Cats visibility 1/4 SM, and increase LNAV Cats C and D 1/4 SM.

▲ MISSED APPROACH: Climb to 2000 direct RIKME and hold.

ATIS 124.475	POTOMAC APP CON 133.75 254.35	EASTON TOWER ★ 118.525 (CTAF) 0	GND CON 119.075	CLNC DEL 119.075
------------------------	-----------------------------------------	--------------------------------------------------	---------------------------	----------------------------



ELEV 72	D	TDZE 72
---------	----------	---------



CATEGORY	A	B	C	D
LPV DA		322-1	250 (300-1)	
LNAV/VNAV DA		362-1	290 (300-1)	
LNAV MDA		440-1	368 (400-1)	

NE-3, 28 NOV 2024 to 26 DEC 2024

NE-3, 28 NOV 2024 to 26 DEC 2024