

WAAS CH 86905 W04A	APP CRS 040°	Rwy Idg 4775 TDZE 58 Apt Elev 72
--	------------------------	---

RNAV (GPS) RWY 4

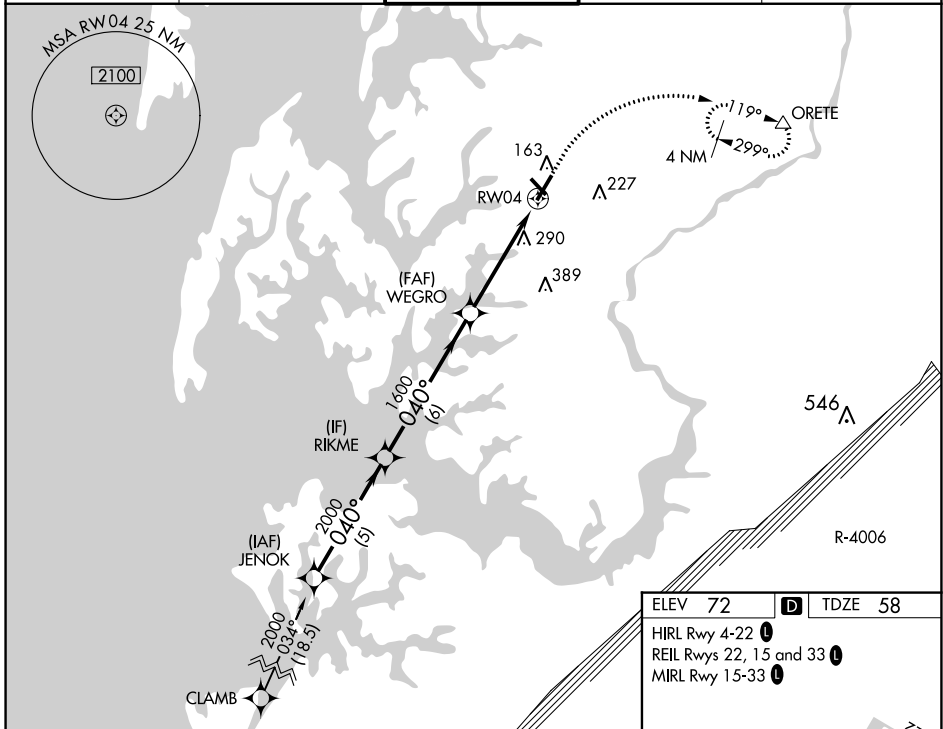
EASTON/NEWNAM FLD (ESN)

RNP APCH - GPS.

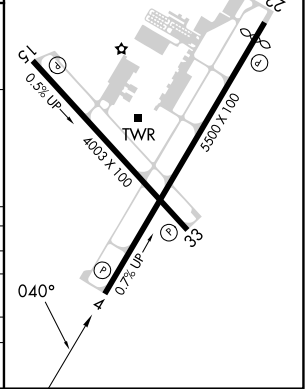
⚠ When local altimeter setting not received, use Cambridge altimeter setting; increase LPV DA to 303 feet, LNAV/VNAV DA to 670 feet and visibility 1/8 SM; increase all MDA's 60 feet and visibility LNAV Cat C/D and Circling Cat C 1/8 SM, and Circling Cat D 1/4 SM. VDP and Baro-VNAV NA when using Cambridge altimeter setting. Circling Rwy 15, 33 NA at night. For uncompensated Baro-VNAV systems, LNAV/VNAV NA below -15°C or above 54°C.

⚠ MISSED APPROACH: Climb to 700 then climbing right turn to 2000 direct ORETE and hold.

ATIS 124.475	POTOMAC APP CON 133.75 254.35	EASTON TOWER ★ 118.525 (CTAF) 0	GND CON 119.075	CLNC DEL 119.075
------------------------	---	--	---------------------------	----------------------------



	JENOK	RIKME	WEGRO	RW04	ORETE
	2000	2000	1600	1600	700
	040°	040°	040°	040°	040°
GP 3.00° TCH 44	5 NM	6 NM	3.1 NM	1.6 NM	
CATEGORY	A	B	C	D	
LPV DA		258-3/4	200 (200-3/4)		
LNAV/VNAV DA		625-1 1/8	567 (600-1 1/8)		
LNAV MDA	600-1	542 (600-1)	600-1 1/8	542 (600-1 1/8)	
CIRCLING	600-1 528 (600-1)	640-1 568 (600-1)	640-1 1/8 568 (600-1 1/8)	740-2 668 (700-2)	



NE-3, 28 NOV 2024 to 26 DEC 2024

NE-3, 28 NOV 2024 to 26 DEC 2024