

LOC I-LWB 110.35	APP CRS 045°	Rwy Idg 7003
		TDZE 2288
		Apt Elev 2302


ILS or LOC RWY 4

GREENBRIER VALLEY (LWB)

RNAV 1-GPS required.
ADF or DME required for LOC only.

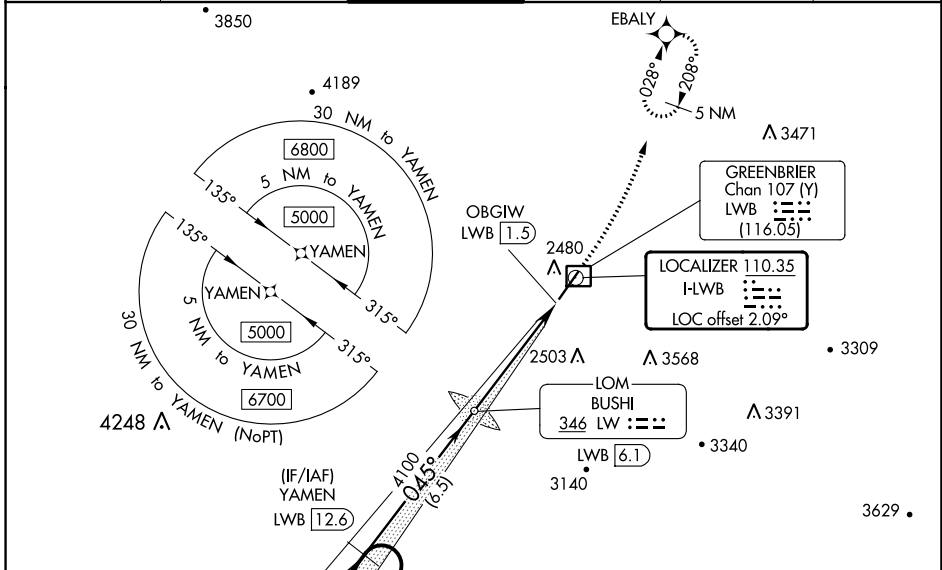
⚠ Autopilot coupled approach NA below 2700. Rwy 4 helicopter visibility reduction below 3/4 SM NA. For inop ALS increase S-ILS 4 all Cats visibility to 7/8 SM, increase S-LOC 4 Cats A/B to 1 1/8 SM.

MALSRL



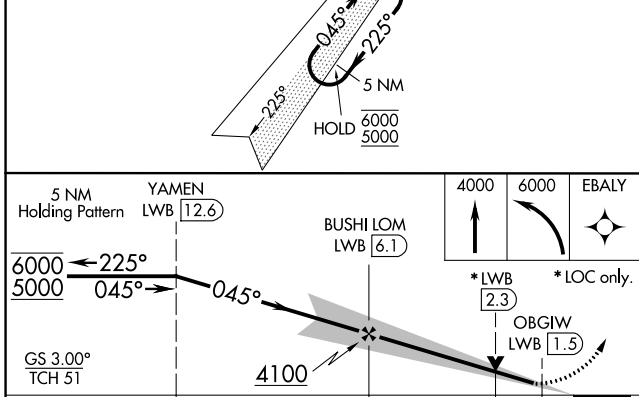
MISSED APPROACH: Climb to 4000 then climbing left turn to 6000 direct EBALY and hold, continue climb-in-hold to 6000.

ATIS ★ 121.4	WASHINGTON CENTER 134.4 353.9	LEWISBURG TOWER★ 118.9 (CTAF) 0	GND CON 121.9	CLNC DEL 125.725 (When twr closed)	UNICOM 122.95
------------------------	---	---	-------------------------	---	-------------------------

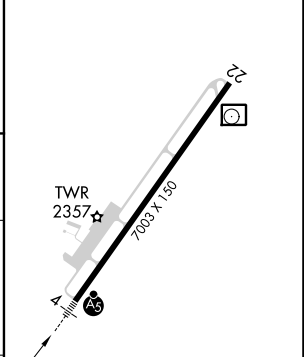


NE-4, 28 NOV 2024 to 26 DEC 2024

NE-4, 28 NOV 2024 to 26 DEC 2024



ELEV 2302	D	TDZE 2288
-----------	----------	-----------



CATEGORY	A	B	C	D
S-ILS 4		2559-3/4	271 (300-3/4)	
S-LOC 4		2720-3/4	432 (500-3/4)	
C CIRCLING	2840-1 538 (600-1)	3040-1 738 (800-1)	3280-3 978 (1000-3)	3680-3 1378 (1400-3)

REIL Rwy 22 1	
HIRL Rwy 4-22 1	
FAF to MAP 4.6 NM	
Knots	60 90 120 150 180
Min:Sec	4:36 3:04 2:18 1:50 1:32