

RNAV (GPS) RWY 24

LAKEWOOD (N12)

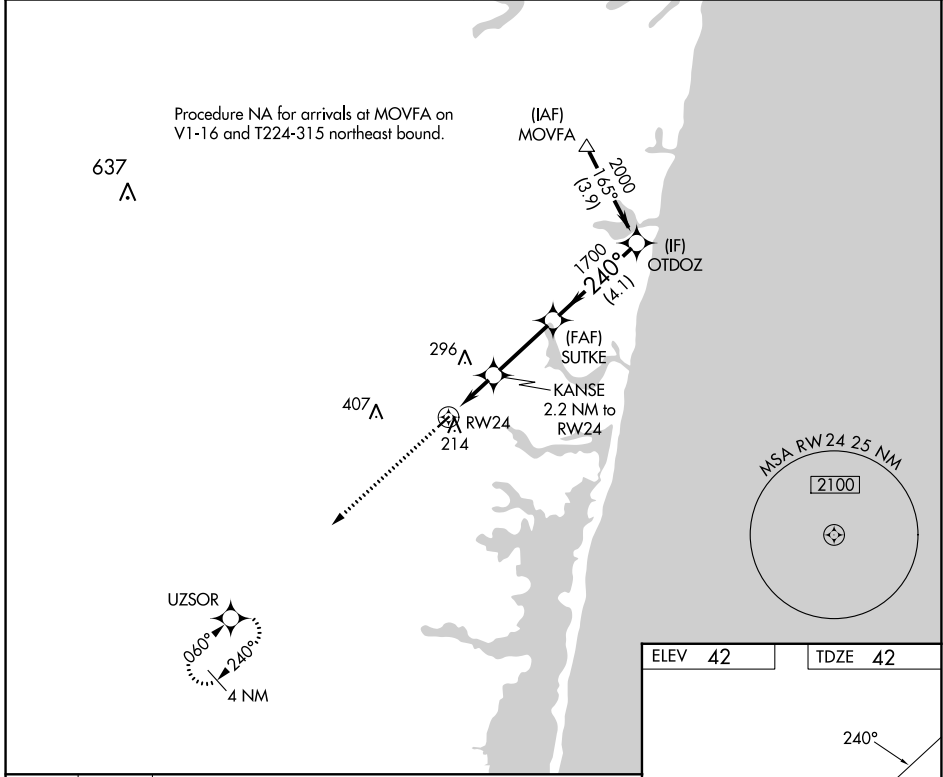
APP CRS	Rwy Idg	2987
240°	TDZE	42
	Apt Elev	42

RNP APCH - GPS.

▽ Rwy 24 helicopter visibility reduction below 1 SM NA.
△ NA Straight-in Rwy 24 NA at night, Circling Rwy 24 NA at night.

MISSED APPROACH: Climb to 2000 direct UZSOR and hold.

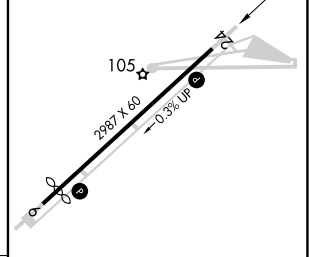
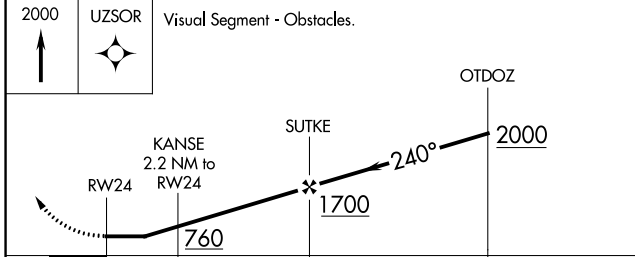
AWOS-AV 122.8	MC GUIRE APP CON 126,475 363,8	GCO 121.725	UNICOM 122.8 (CTAF)
-------------------------	--	-----------------------	-------------------------------



NE-2, 28 NOV 2024 to 26 DEC 2024

NE-2, 28 NOV 2024 to 26 DEC 2024

ELEV 42	TDZE 42
---------	---------



CATEGORY	A	B	C	D
LNNAV MDA	520-1	478 (500-1)		NA
C CIRCLING	540-1 498 (500-1)	620-1 578 (600-1)		NA

MIRL Rwy 6-24 **①**
 REL Rwy 6 and 24