

LOC I-MJX <b>109.9</b>	APP CRS <b>063°</b>	Rwy Idg TDZE Apt Elev	<b>5835</b> <b>81</b> <b>86</b>
---------------------------	------------------------	-----------------------------	---------------------------------------

# ILS or LOC RWY 6

OCEAN COUNTY (MJX)

**⚠** Circling Rwy 14, 32 NA at night. Inop table does not apply to S-ILS 6. For inop ALS, increase S-LOC 6 Cats A/B and S-LOC 6 XOQR Fix minimums Cats A/B visibility to 1. **⚠ NA** When local altimeter setting not received, use Mc Guire Fld (Joint Base Mc Guire Dix Lakehurst) altimeter setting and increase all DA 41 feet and all MDA 60 feet; increase S-LOC 6 Cats C/D and Circling Cat C visibility ½ mile, Cat D ¼ mile; increase XOQR Fix minimums S-LOC 6 Cat C/D visibility ½ mile and Circling Cat D ¼ mile. For inop ALS when using Mc Guire Fld (Joint Base Mc Guire Dix Lakehurst) altimeter setting, increase S-ILS 6 all Cats visibility to ¾ and S-LOC 6 Cats A/B and S-LOC 6 XOQR Fix minimums Cats A/B visibility to 1, Cats C/D visibility to 1 ½. Rwy 6 helicopter visibility reduction below ¾ SM NA.

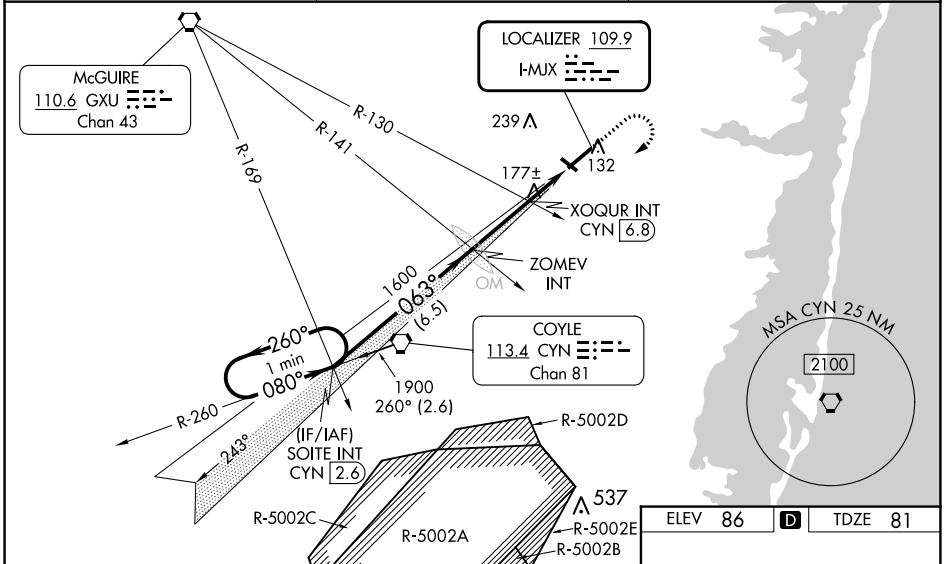
**MISSED APPROACH:**  
Climb to 600 then climbing right turn to 1900 direct CYN VORTAC then on CYN R-260 to SOITE INT/CYN 2.6 DME and hold.

**MALSR**

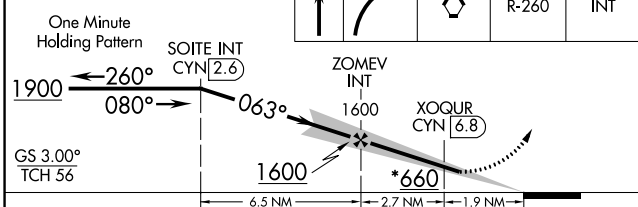
AWOS-3PT  
**119.875**

MC GUIRE APP CON  
**126.475 363.8**

UNICOM  
**122.7 (CTAF) ①**

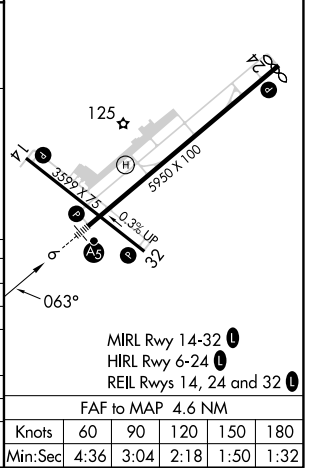


\*720 when using Joint Base Mc Guire Dix Lakehurst altimeter setting.



ELEV 86	<b>D</b>	TDZE 81
---------	----------	---------

CATEGORY	A	B	C	D
S-ILS 6		331-¾	250 (300-¾)	
S-LOC 6	660-¾	579 (600-¾)	660-1¼	579 (600-1¼)
<b>C</b> CIRCLING	660-1	574 (600-1)	574 (600-1¾)	614 (700-2)
XOQR FIX MINIMUMS (DUAL VOR RECEIVERS or DME REQUIRED)				
S-LOC 6	520-¾	439 (500-¾)	520-7/8	439 (500-7/8)
<b>C</b> CIRCLING	540-1	560-1	580-1½	700-2
	454 (500-1)	474 (500-1)	494 (500-1½)	614 (700-2)



NE-2, 28 NOV 2024 to 26 DEC 2024

NE-2, 28 NOV 2024 to 26 DEC 2024