

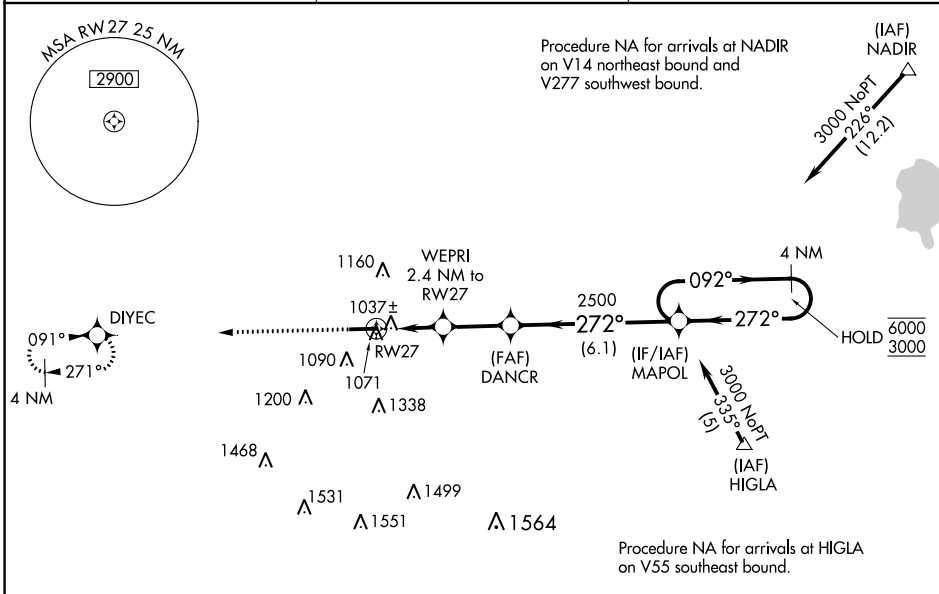
WAAS CH 73025 W27A	APP CRS 272°	Rwy Idg 5505 TDZE 925 Apt Elev 925
----------------------------------------	------------------------	---------------------------------------------------------------

RNAV (GPS) RWY 27

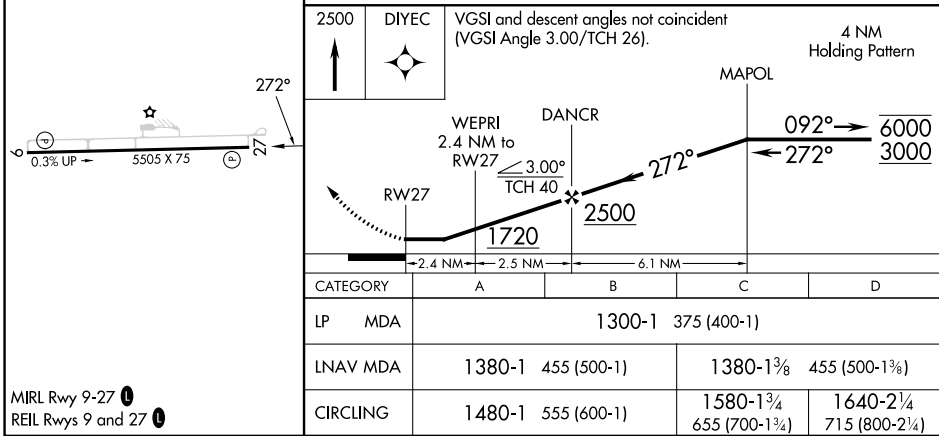
PORTLAND MUNI (PLD)

RNP APCH - GPS.	<p>MISSED APPROACH: Climb to 2500 direct DIYEC and hold.</p>
<p>▼ Rwy 27 helicopter visibility reduction below 1 SM NA. ▲ Straight-in Rwy 27 NA at night, Circling Rwy 27 NA at night.</p>	

AWOS-3 124.675	FORT WAYNE APP CON 132.15 (SE/NE) 284.6 127.2 (SW/NW) 284.6	UNICOM 122.8 (CTAF) 0
--------------------------	---------------------------------------------------------------------------------	---------------------------------



ELEV 925	TDZE 925
----------	----------



MIRL Rwy 9-27 0
REIL Rwy 9 and 27 0

PORTLAND, INDIANA
Amdt 2A 25JAN24

40°27'N-85°00'W

PORTLAND MUNI (PLD) RNAV (GPS) RWY 27

EC-2, 28 NOV 2024 to 26 DEC 2024

EC-2, 28 NOV 2024 to 26 DEC 2024