

WAAS CH 78403 W24A	APP CRS 234°	Rwy Idg TDZE Apt Elev	5504 847 859
--	------------------------	-----------------------------	---

RNAV (GPS) RWY 24

ALBERTUS (F'EP)

RNP APCH - GPS.

▼ For uncompensated Baro-VNAV systems, LNAV/VNAV NA below -16°C or above 54°C.
▲ When local altimeter setting not received, use Chicago/Rockford altimeter setting: increase LPV and LNAV/VNAV DA to 1164 feet; increase all MDA 80 feet and LNAV visibility Cat C/D and Circling Cat C/D visibility ¼ SM. Baro-VNAV and VDP NA when using Chicago/Rockford altimeter setting. Circling NA to Rwy's 13, 18, 31, 36. For inop ALS, increase LNAV/VNAV all Cats visibility to ¾ SM. For inop ALS, when using Chicago/Rockford altimeter setting, increase LPV and LNAV/VNAV all Cats visibility to ¾ SM and LNAV C/D visibility to 1 ½ SM.

MALSR



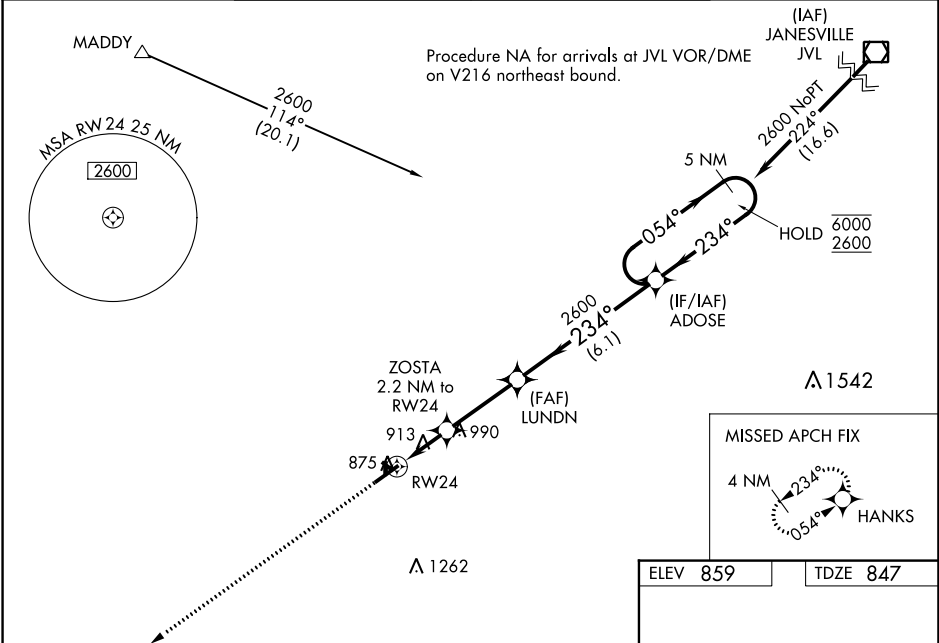
MISSED APPROACH:
Climb to 2600 direct HANKS and hold.

AWOS-3
120.525

ROCKFORD APP CON
126.0 327.0

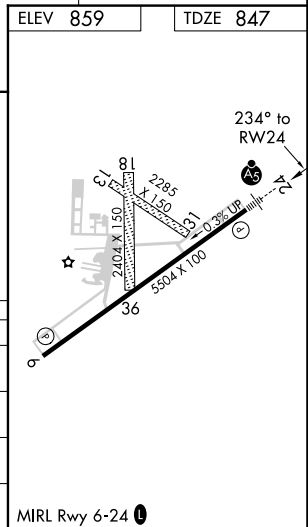
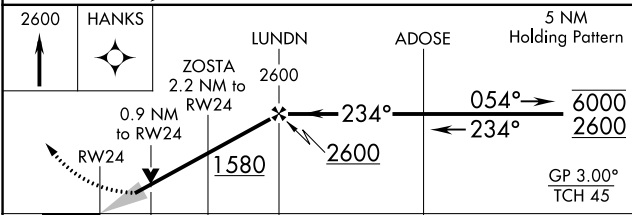
CLNC DEL
121.85

UNICOM
122.8 (CTAF)



EC-3, 28 NOV 2024 to 26 DEC 2024

EC-3, 28 NOV 2024 to 26 DEC 2024



CATEGORY	A	B	C	D
LPV DA		1097-½	250 (300-½)	
LNAV/VNAV DA		1097-½	250 (300-½)	
LNAV MDA		1180-½	333 (400-½)	
CIRCLING	1320-1 461 (500-1)	1400-1 541 (600-1)	1440-1½ 581 (600-1½)	1620-2½ 761 (800-2½)