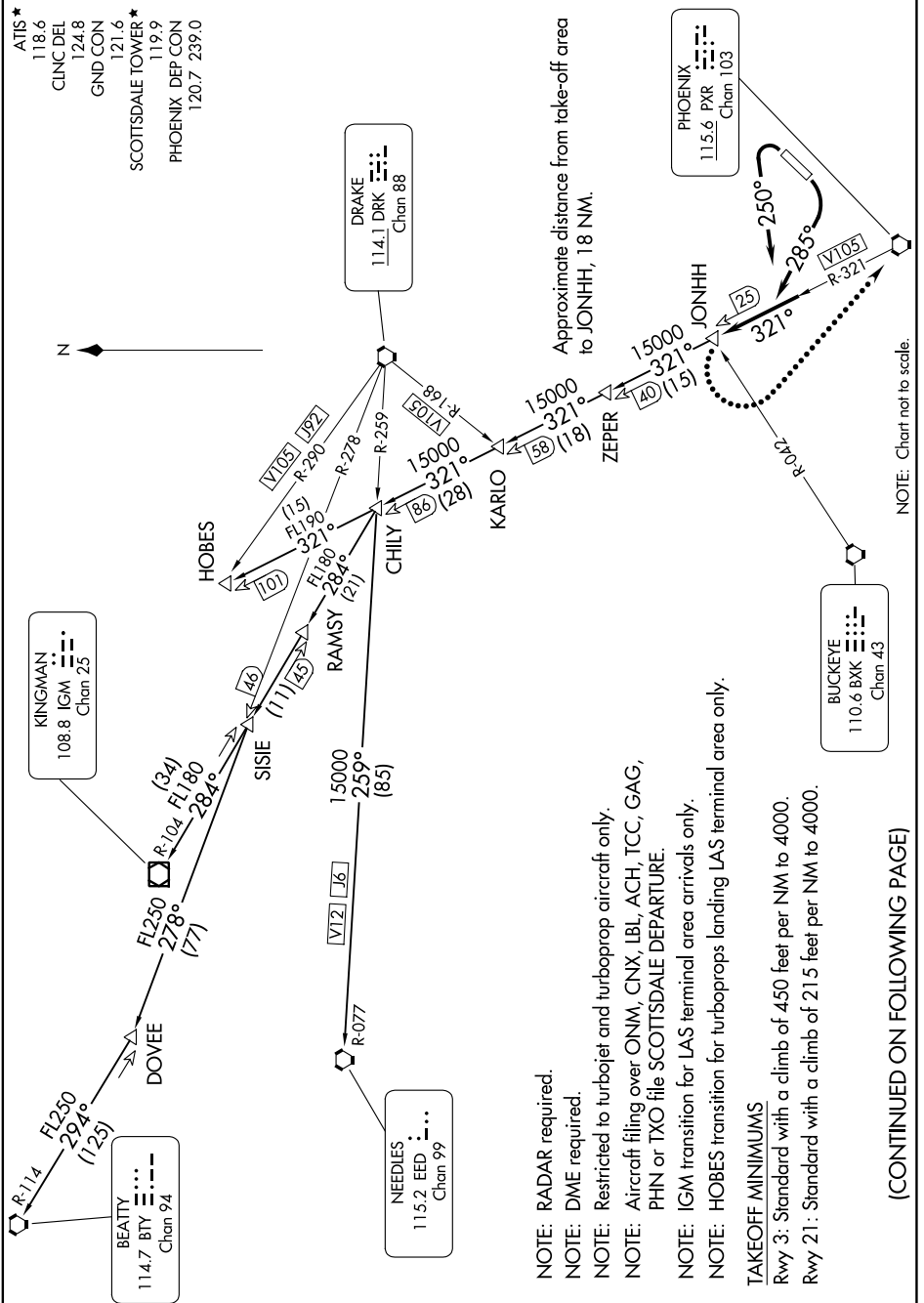


JONHH TWO DEPARTURE

AL-5651 (FAA)

SCOTTSDALE (SDL)
SCOTTSDALE, ARIZONA

SW-4, 28 NOV 2024 to 26 DEC 2024



NOTE: RADAR required.

NOTE: DME required.

NOTE: Restricted to turbojet and turboprop aircraft only.

NOTE: Aircraft filing over ONM, CNX, LBL, ACH, TCC, GAG, PHN or TXO file SCOTTSDALE DEPARTURE.

NOTE: IGM transition for LAS terminal area arrivals only.

NOTE: HOBES transition for turboprops landing LAS terminal area only.

TAKEOFF MINIMUMS

Rwy 3: Standard with a climb of 450 feet per NM to 4000.

Rwy 21: Standard with a climb of 215 feet per NM to 4000.

(CONTINUED ON FOLLOWING PAGE)

NOTE: Chart not to scale.

SW-4, 28 NOV 2024 to 26 DEC 2024