

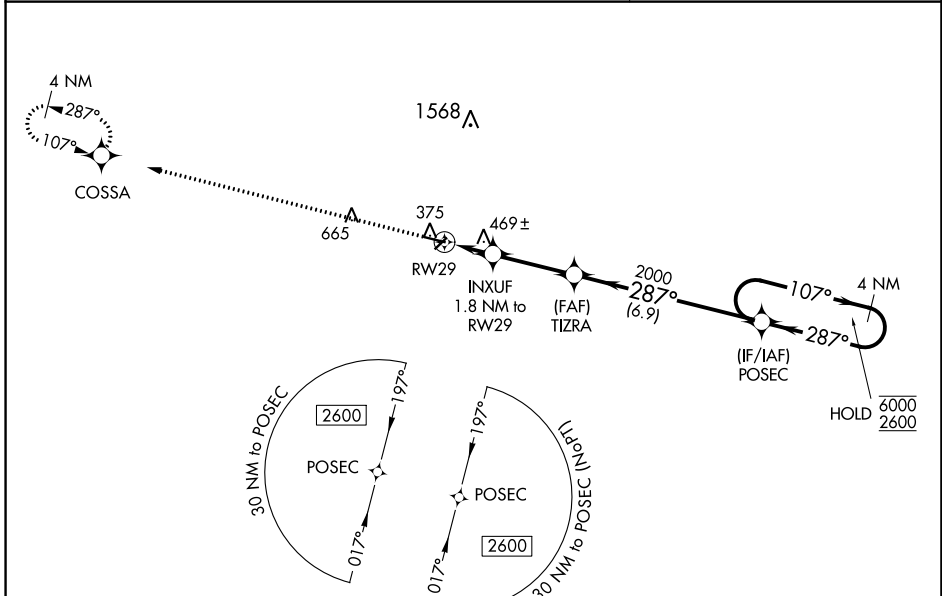
WAAS CH 86319 W29A	APP CRS 287°	Rwy Idg TDZE Apt Elev	4400 358 377
--	------------------------	-----------------------------	---

RNAV (GPS) RWY 29

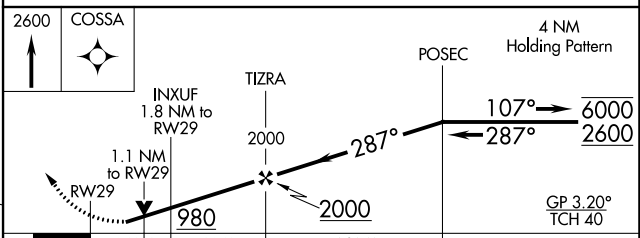
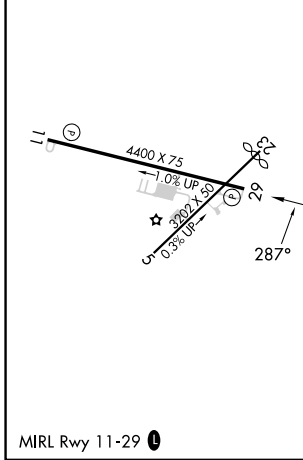
COCHRAN (48A)

RNP APCH - GPS.		MISSED APPROACH: Climb to 2600 direct COSSA and hold.
<p>⚠ Circling Rwy 5, 11 and 23 NA at night. Rwy 29 helicopter visibility reduction below $\frac{3}{4}$ SM NA. For uncompensated Baro-VNAV systems, LNAV/VNAV NA below -15°C or above 54°C.</p>		

AWOS-3PT 120.975	ATLANTA APP CON * 124.2 279.6	UNICOM 122.8 (CTAF) 0
----------------------------	---	---------------------------------



ELEV 377	D	TDZE 358
----------	----------	----------



CATEGORY	A	B	C	D
LPV DA		628-1	270 (300-1)	
LNAV/VNAV DA		608-1	250 (300-1)	
LNAV MDA		720-1	362 (400-1)	
C CIRCLING	820-1 443 (500-1)	860-1 483 (500-1)	980-1 $\frac{3}{4}$ 603 (700-1 $\frac{3}{4}$)	980-2 603 (700-2)

SE-4, 28 NOV 2024 to 26 DEC 2024

SE-4, 28 NOV 2024 to 26 DEC 2024