

WAAS CH 63024 W35A	APP CRS 348°	Rwy Idg TDZE Apt Elev	5781 5821 5868
--	------------------------	-----------------------------	---

RNAV (GPS) RWY 35

BLANDING MUNI (BDG)

RNP APCH.

▽ For uncompensated Baro-VNAV systems, LNAV/VNAV
▲ NA below -26°C or above 54°C.

MISSED APPROACH: (Do not exceed 165K until GERRO)
 Climb to 6300 then climbing right turn to 8500 direct
 GERRO and hold.

AWOS-3PT
127.75

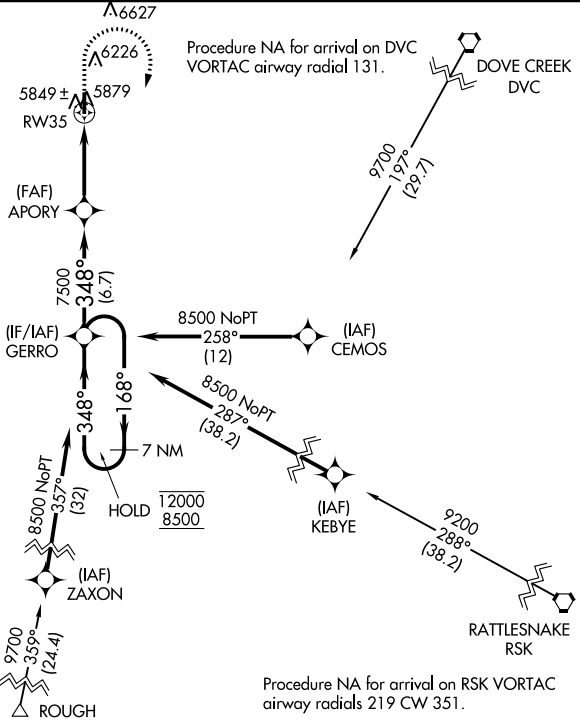
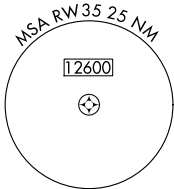
DENVER CENTER
127.55 354.05

UNICOM
122.8 (CTAF) 0

SW-4, 28 NOV 2024 to 26 DEC 2024

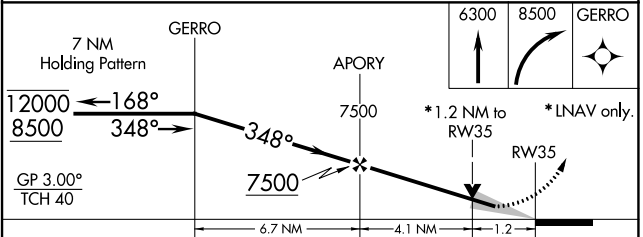
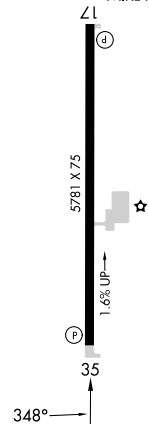
SW-4, 28 NOV 2024 to 26 DEC 2024

● 9058



ELEV 5868 TDZE 5821

REIL Rwy 17 and 35
 MIRL Rwy 17-35



CATEGORY	A	B	C	D
LPV DA		6071-1	250 (300-1)	NA
LNAV/VNAV DA		6077-1	256 (300-1)	NA
LNAV MDA	6200-1	379 (400-1)	6200-1 ¹ / ₄ 379 (400-1 ¹ / ₄)	NA
CIRCLING	6440-1 572 (600-1)	6540-1 672 (700-1)	6760-2 ³ / ₄ 892 (900-2 ³ / ₄)	NA