

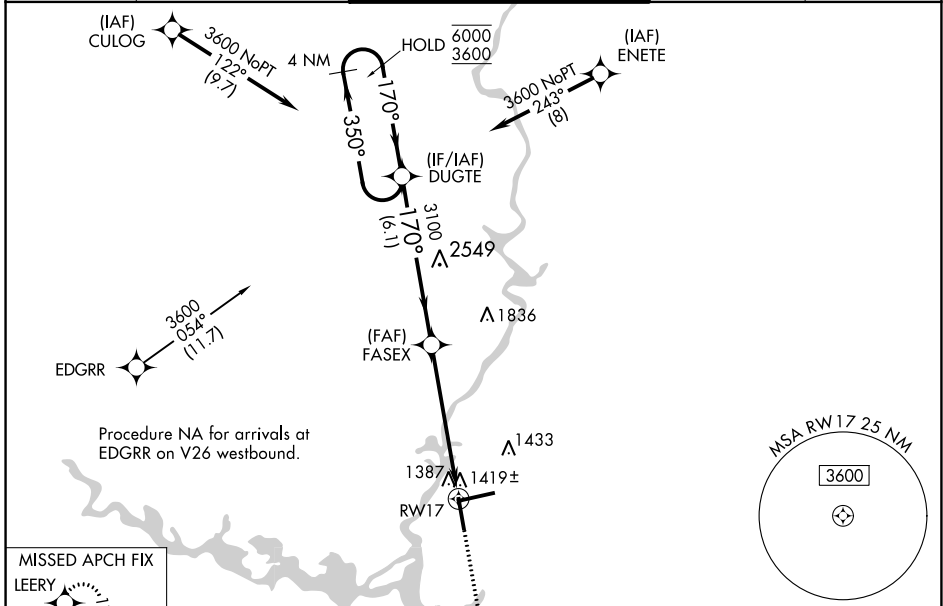
WAAS CH 53321 W17A	APP CRS 170°	Rwy Idg TDZE Apt Elev	6501 1277 1277
--	------------------------	-----------------------------	---

RNAV (GPS) RWY 17

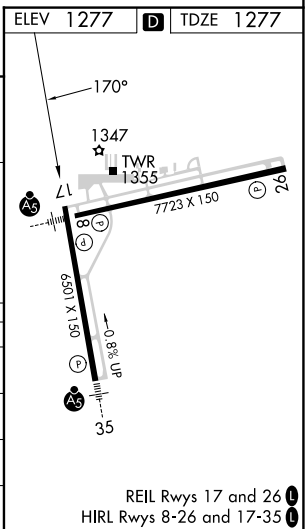
CENTRAL WISCONSIN (CWA)

RNP APCH - GPS.		MISSED APPROACH: Climb to 2900 direct LEERY and hold.
⚠ Rwy 17 helicopter visibility reduction below 3/4 SM NA. ⚠ For uncompensated Baro-VNAV systems, LNAV/VNAV NA below -17°C or above 54°C.		

ATIS 127.45	MINNEAPOLIS CENTER 124.4 317.7	CWA TOWER★ 119.75 (CTAF) 0 360.7	GND CON 121.9 360.7	UNICOM 122.95
-----------------------	--	--	-------------------------------	-------------------------



4 NM Holding Pattern		VGSI and RNAV glidepath not coincident.		ELEV 1277	TDZE 1277
DUGTE 6000 ← 350° 3600 ← 170° →		FASEX 3100 1.1 NM to RW17		2900	LEERY
GP 3.00° TCH 45		RW17			
CATEGORY	A	B	C	D	
LPV DA		1534-1	257 (300-1)		
LNAV/VNAV DA		1601-1 1/8	324 (400-1 1/8)		
LNAV MDA	1680-1	403 (500-1)	1680-1 1/8	403 (500-1 1/8)	
CIRCLING	1740-1	463 (500-1)	1740-1 1/2	1840-2	563 (600-2)



EC-3, 28 NOV 2024 to 26 DEC 2024

EC-3, 28 NOV 2024 to 26 DEC 2024