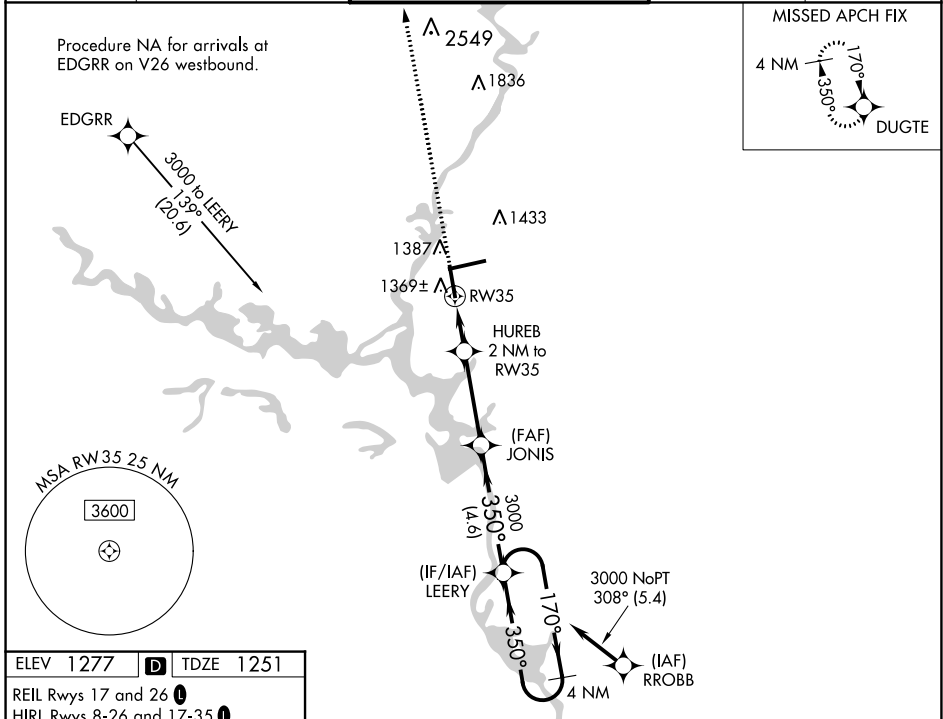


WAAS CH 93521 W35A	APP CRS 350°	Rwy Idg TDZE Apt Elev	6501 1251 1277
----------------------------------------	------------------------	-----------------------------	-------------------------------------------

RNAV (GPS) RWY 35

CENTRAL WISCONSIN(CWA)

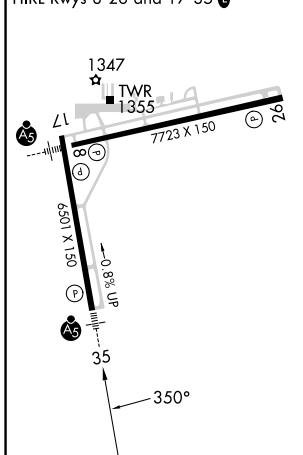
For uncompensated Baro-VNAV systems, LNAV/VNAV NA below -17°C (2°F) or above 54°C (130°F). DME/DME RNP-0.3 NA.		MALSR 	MISSED APPROACH: Climb to 3600 direct DUGTE and hold.	
ATIS 127.45	MINNEAPOLIS CENTER 124.4 317.7	CWA TOWER* 119.75(CTAF) 360.7	GND CON 121.9 360.7	UNICOM 122.95



EC-3, 28 NOV 2024 to 26 DEC 2024

EC-3, 28 NOV 2024 to 26 DEC 2024

ELEV 1277	D	TDZE 1251
REIL Rwy's 17 and 26		
HIRL Rwy's 8-26 and 17-35		



3600	DUGTE	4 NM Holding Pattern			
*LNAV only.					
RW35		HUREB 2 NM to RW35	JONIS 3000	LEERY	4 NM
*1.1 NM to RW35		*1900	350°	170°	3000
1.1 NM		0.9	3.4 NM	4.6 NM	GP 3.00° TCH 50
CATEGORY	A	B	C	D	
LPV DA		1451-½	200 (200-½)		
LNAV/VNAV DA		1576-¾	325 (300-¾)		
LNAV MDA	1620-½	369 (400-½)	1620-⅝	369 (400-⅝)	
C CIRCLING	1740-1	463 (500-1)	1740-1½ 463 (500-1½)	1840-2 563 (600-2)	