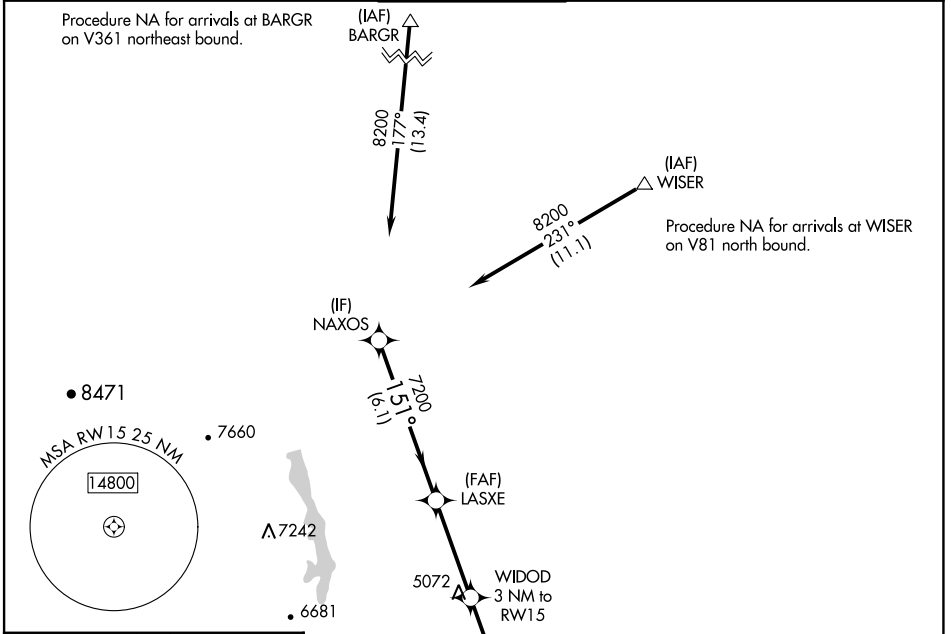


APP CRS <b>151°</b>	Rwy Idg <b>8500</b>
	TDZE <b>4990</b>
	Apt Elev <b>5020</b>

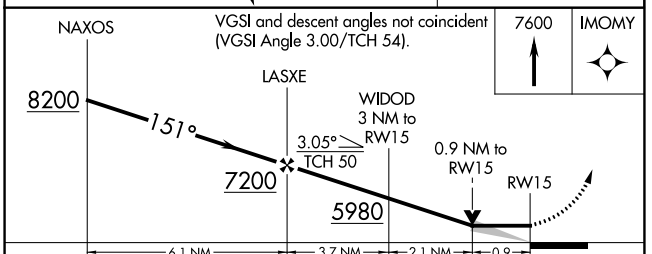
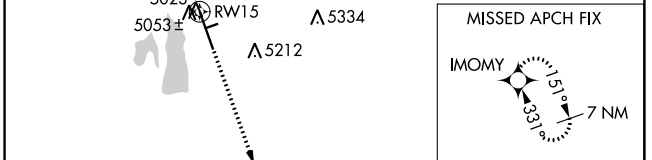
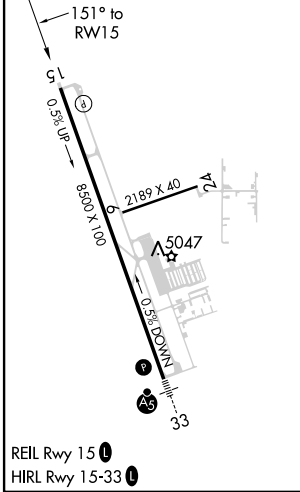
# RNAV (GPS) RWY 15

NORTHERN COLORADO RGNL (FNL)

RNP APCH-GPS.		MISSED APPROACH: Climb to 7600 direct IMOMY and hold.		
ATIS <b>135.075</b>	DENVER APP CON <b>134.85 251.125</b>	NOCO TOWER* <b>118.4 (CTAF) 0</b>	GND CON <b>121.65</b>	CLNC DEL <b>120.25</b> (When twr closed)



ELEV 5020	TDZE 4990
-----------	-----------



CATEGORY	A	B	C	D
LNAV MDA	5320-1 330 (400-1)			

SW-1, 28 NOV 2024 to 26 DEC 2024

SW-1, 28 NOV 2024 to 26 DEC 2024