

WAAS CH <b>45618</b> <b>W11A</b>	APP CRS <b>113°</b>	Rwy Idg <b>6200</b> TDZE <b>2976</b> Apt Elev <b>3004</b>
--	------------------------	---

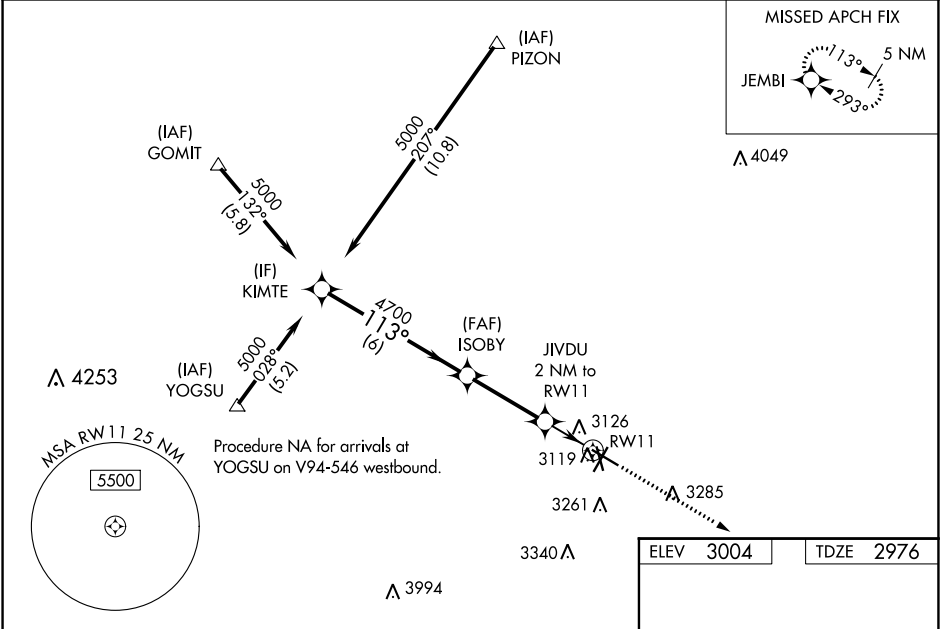
# RNAV (GPS) RWY 11

ODESSA-SCHLEMEYER FLD (ODO)

**⚠** Circling to Rwy 16 and 20 NA at night. For uncompensated Baro-VNAV systems, LNAV/VNAV NA below -20°C (-4°F) or above 54°C (130°F). DME/DME RNP-0.3 NA. Circling NA S of Rwys 2 and 34. When local altimeter setting not received use Midland Intl Air and Space Port altimeter setting and increase all DA 41 feet and all MDA 60 feet and increase LNAV/VNAV all Cats visibility 1/8 mile, LNAV Cat C and D and Circling Cat C visibility 1/4 mile. VDP NA with Midland Intl Air and Space Port altimeter setting. Baro-VNAV NA when using Midland Intl Air and Space Port altimeter setting.

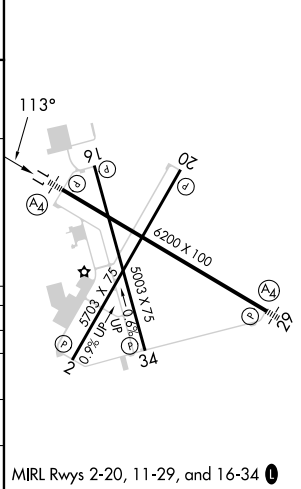
MALS MISSED APPROACH: Climb to 5000 direct JEMBI and hold.

ASOS <b>119.275</b>	MIDLAND APP CON * <b>124.6 256.875</b>	CLNC DEL <b>121.7</b>	UNICOM <b>123.0</b> (CTAF)
------------------------	---	--------------------------	-------------------------------



KIMTE		ISOBY		JIVDU		JEMBI	
5000		4700		2 NM to RWY 11		5000	
113°		4700		*1.2 NM to RWY 11		*LNAV only	
GP 3.00°		*3640		RWY 11			
TCH 40		6 NM		3.2 NM		0.8 NM	
				1.2 NM			
CATEGORY	A	B	C	D			
LPV DA		3176-3/4	200 (200-3/4)				
LNAV/VNAV DA		3347-1 1/4	371 (400-1 1/4)				
LNAV MDA	3380-1	404 (400-1)	3380-1 1/8	404 (400-1 1/8)			
CIRCLING	3460-1	456 (500-1)	3600-1 1/2	3600-2			
			596 (600-1 1/2)	596 (600-2)			

ELEV	3004	TDZE	2976
------	------	------	------



SC-3, 28 NOV 2024 to 26 DEC 2024

SC-3, 28 NOV 2024 to 26 DEC 2024