

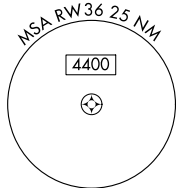
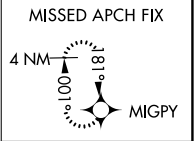
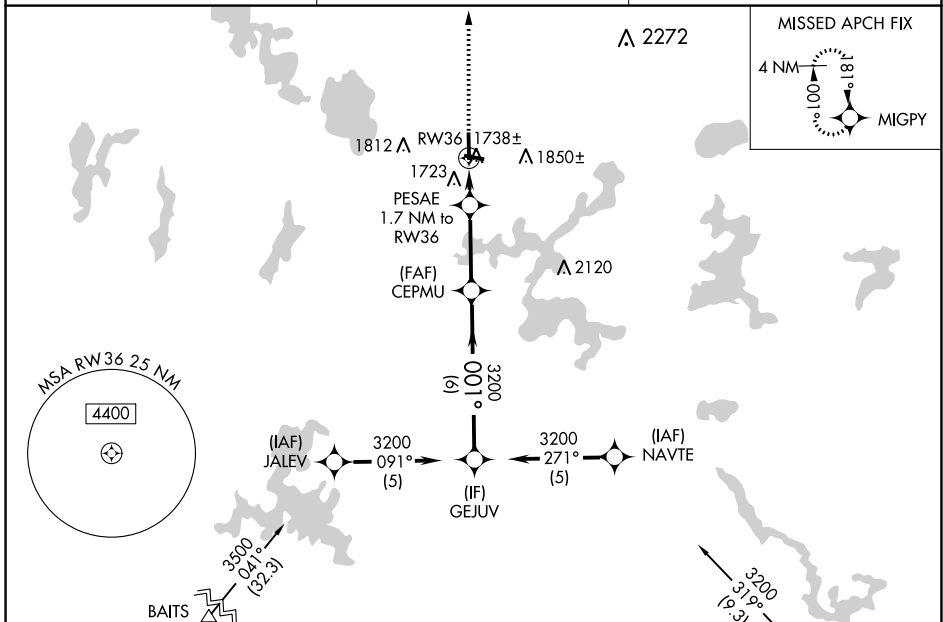
WAAS CH <b>49115</b> <b>W36A</b>	APP CRS <b>001°</b>	Rwy Idg TDZE Apt Elev	<b>5150</b> <b>1627</b> <b>1630</b>
--	------------------------	-----------------------------	---

# RNAV (GPS) RWY 36

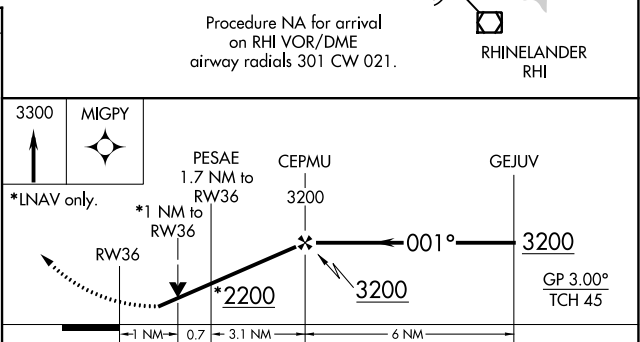
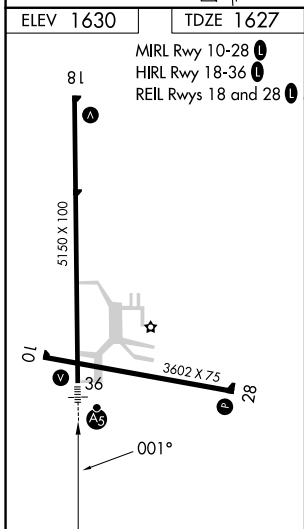
LAKELAND/NOBLE F LEE MEML FLD (A.R.V)

RNP APCH.	MALSRL A5	MISSED APPROACH: Climb to 3300 direct MIGPY and hold.
-----------	--------------	---

AWOS-3 <b>121.125</b>	MINNEAPOLIS CENTER <b>133.65 281.5</b>	UNICOM <b>122.7 (CTAF)</b>
--------------------------	---	-------------------------------



Procedure NA for arrival on RHI VOR/DME airway radials 301 CW 021.



CATEGORY	A	B	C	D
LPV DA		1948-1	321 (400-1)	
LNAV/VNAV DA		1999-1	372 (400-1)	
LNAV MDA		2000-1	373 (400-1)	
<b>C</b> CIRCLING	2100-1 470 (500-1)	2200-1 570 (600-1)	2200-1½ 570 (600-1½)	2220-2 590 (600-2)

EC-3, 28 NOV 2024 to 26 DEC 2024

EC-3, 28 NOV 2024 to 26 DEC 2024