

VORTAC SPI 112.7 Chan 74	APP CRS 041°	Rwy Idg TDZE Apt Elev	4000 593 594
----------------------------------------------	------------------------	-----------------------------	-----------------------------------------

VOR RWY 3

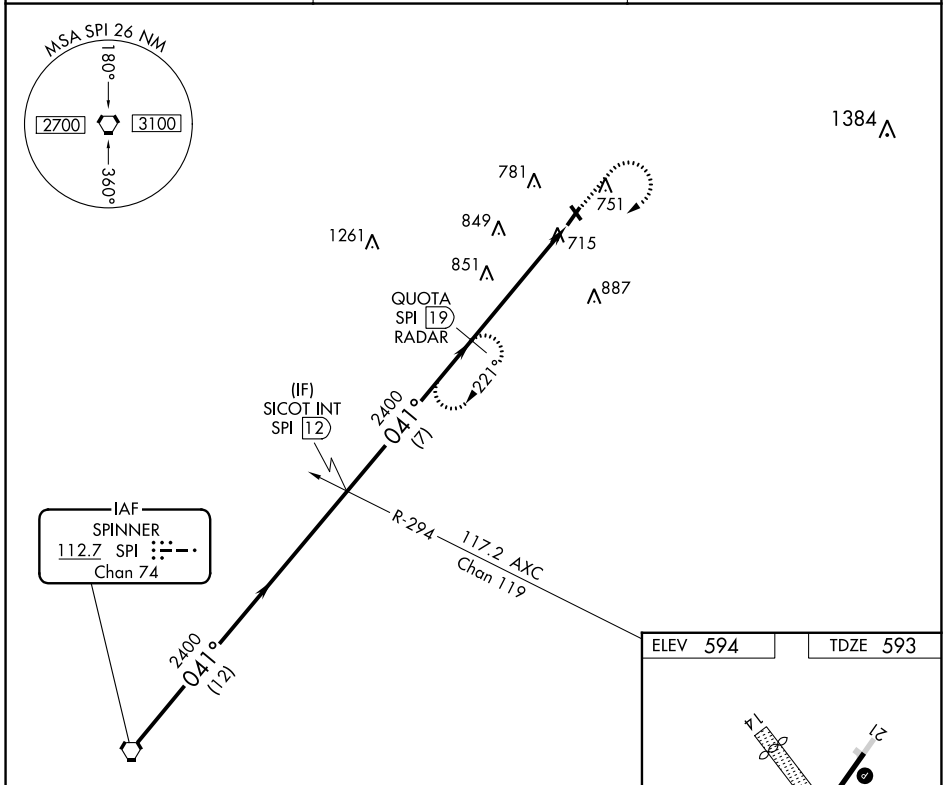
LOGAN COUNTY (AAA)

DME or RADAR required.

⚠ When local altimeter setting not received, use Springfield, IL altimeter setting and increase all MDAs 60 feet, increase Circling Cat C/D visibility ¼ SM. Circling NA to Rwy 14 and 32. Rwy 3 helicopter visibility reduction below ¾ SM NA.

MISSED APPROACH: Climb to 2000 then climbing right turn to 2400 via SPI R-041 to QUOTA/19 DME/RADAR and hold.

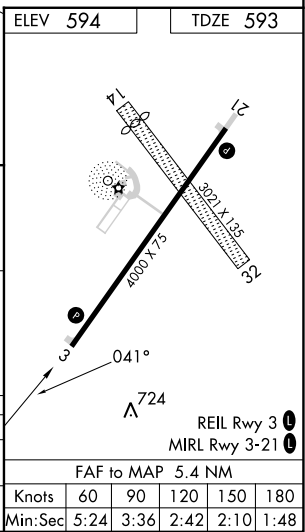
AWOS-3 118.775	SAINT LOUIS APP CON ★ 126.15 323.0	UNICOM 122.8 (CTAF)
--------------------------	----------------------------------------------	-------------------------------



EC-3, 28 NOV 2024 to 26 DEC 2024

EC-3, 28 NOV 2024 to 26 DEC 2024

Procedure Turn NA	VGSIs and descent angles not coincident (VGSIs Angle 3.50/TCH 26).		2000	2400	QUOTA SPI 19
SPI VORTAC	SICOT INT SPI 12	QUOTA SPI 19 RADAR	↑	↘ SPI R-041	QUOTA SPI 19
2400	041°	2400	3.09° TCH 36	SPI 24.4	
12 NM		7 NM	5.4 NM		
CATEGORY	A	B	C	D	
S-3	1120-1 527 (600-1)	1120-1¼ 527 (600-1¼)	1120-1½ 527 (600-1½)	1120-1¾ 527 (600-1¾)	
CIRCLING	1140-1 546 (600-1)	1140-1¼ 546 (600-1¼)	1280-2 686 (700-2)	1280-2¼ 686 (700-2¼)	



FAF to MAP 5.4 NM					
Knots	60	90	120	150	180
Min:Sec	5:24	3:36	2:42	2:10	1:48